



Prepared for:  
National Grid  
Brooklyn, NY

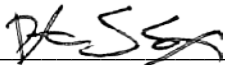
Prepared by:  
AECOM  
Manhattan, NY  
60137362  
November 2016

# 2<sup>ND</sup> Annual Report Interim Remedial Measure for NAPL Recovery - June 2015 through July 2016

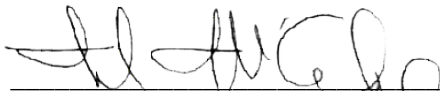
Former Equity Works MGP Site  
Brooklyn, New York  
NYSDEC Site No.: 224050  
Order on Consent Index #: A2-0552-0606  
EPA ID number for the Site: NYR 000 225 615

# 2<sup>ND</sup> Annual Report Interim Remedial Measure for NAPL Recovery - June 2015 through July 2016

Former Equity Works MGP Site  
Brooklyn, New York  
NYSDEC Site No.: 224050  
Order on Consent Index #: A2-0552-0606  
EPA ID number for the Site: NYR 000 225 615



Prepared by Peter S. Cox, Project Manager



Reviewed by Mark McCabe, Program Manager

## Contents

<b>1.0 Introduction.....</b>	<b>1-1</b>
<b>2.0 Recovery Well Installation and Operation.....</b>	<b>2-1</b>
2.1 Recovery Well Designs .....	2-1
2.2 Initial Monitoring and NAPL Recovery .....	2-1
2.2.1 Primary Recovery Wells .....	2-2
2.2.2 Secondary Recovery Wells .....	2-2
2.2.3 Gauging Wells.....	2-2
2.3 System Operation .....	2-2
2.3.1 Automated Wells.....	2-2
2.3.2 Gauging Wells.....	2-2
<b>3.0 System Performance.....</b>	<b>3-1</b>
3.1 NAPL Recovery .....	3-1
3.1.1 Automated Wells.....	3-1
3.1.2 Gauging Wells.....	3-1
3.2 Waste Management.....	3-2
3.3 System Maintenance .....	3-2
3.4 Incidents/Unplanned Releases.....	3-2
<b>4.0 Recommendations for Future Operation .....</b>	<b>4-1</b>
<b>5.0 References .....</b>	<b>5-1</b>

## List of Appendices

Appendix A Waste Disposal Documentation

## List of Tables

Table 2-1	Categories of Recovery Wells
Table 3-1	NAPL Monitoring and Recovery – Automated Wells
Table 3-2	NAPL Monitoring and Recovery – Gauging Wells
Table 3-3	Summary of Waste Management

## List of Figures

Figure 1-1	Site Location
Figure 1-2	Site Properties
Figure 2-1	Locations of On-Site and Perimeter Recovery Wells
Figure 2-2	Completed Well Location
Figure 2-3	Location of Automated Wells
Figure 2-4	Control Trailer
Figure 3-1	Cumulative Volume of Mixed Fluids Collected
Figure 3-2	NAPL Thickness Versus Time – Gauging Wells
Figure 4-1	NAPL Recharge Rates Versus Time – Automated Wells

## List of Acronyms

°F	Degrees Fahrenheit
BUG	Brooklyn Union Gas Company
DNAPL	Dense Non-aqueous Phase Liquid
ft	Feet
gpd	Gallons per day
gpm	Gallons per minute
IRM	Interim Remedial Measure
MGP	Manufactured Gas Plant
NAPL	Non-aqueous Phase Liquid
NYSDEC	New York State Department of Environmental Conservation
NYSDOH	New York State Department of Health
PDI	Pre-Design Investigation
PVC	Polyvinyl chloride
TOC	Top of Casing

## Executive Summary

National Grid's consultant, AECOM, has prepared this Interim Remedial Measure (IRM) Annual Report to document the second year of operation of the non-aqueous phase liquid (NAPL) recovery system within the footprint of the former Equity Manufactured Gas Plant (MGP) site (the Site) located at 254 Maspeth Avenue in Brooklyn, New York during the period of June 2015 through July 2016. The IRM is being conducted pursuant to a Multi-site Order on Consent and Administrative Settlement, Index # A2-0552-0606, between The Brooklyn Union Gas Company (BUG) d/b/a National Grid NY, and the New York State Department of Environmental Conservation (NYSDEC). Details regarding the construction of the NAPL IRM remedy are included in the IRM for NAPL Recovery Construction Completion Report (CCR), submitted to the NYSDEC in May 2015 (AECOM, 2015).

The Site is located in a historically industrialized area and operated as a MGP from approximately 1893 to 1929. BUG acquired the MGP in approximately 1903 and transferred ownership of the Site in 1951. The Site currently consists of three adjoining properties – 222 Maspeth Avenue, 252 Maspeth Avenue, and 254 Maspeth Avenue. The 222 Maspeth Avenue property is used by Cooper Tank as a solid waste recycling facility, with the 252 and 254 parcels used to support Cooper Tank's recycling operations.

The IRM activities included the following:

- installation of 5 recovery wells at appropriate locations within the central areas of the Site to reduce the quantity of NAPL, and at 18 selected perimeter locations to control the potential for off-site migration.
- on-going measurement and recovery of NAPL that collects in the recovery wells.

Data collected to date indicated that NAPL collection rates at 12 of the 23 recovery well locations (2 on-site and 10 perimeter) warrant the operation of pumps to support automated recovery. The well pumps are controlled with timers that are adjusted, as required, with a goal of containing the NAPL within the sump of each well, but at a level above the inlet to the pump to minimize the collection of groundwater. The remaining 11 wells are managed using manual recovery techniques on a quarterly basis.

During the period of June 3, 2015 to July 28, 2016, the system has operated with an on-line factor of 93% without incidents or unplanned releases from the system. Approximately 8,857 gallons of mixed fluids were collected from the system during this period and managed as an alternative fuel at the Tradebe Facility in Cohoes, New York. The quantity represents an increase from the first year of operation, but observations of the collected material indicate that the mixed fluids may contain a higher percentage of entrained water.

## 1.0 Introduction

National Grid's consultant, AECOM, is submitting this 2<sup>nd</sup> Annual Report outlining the Interim Remedial Measure (IRM) for NAPL Recovery progress during its second year of operation. The NAPL recovery system is located within the footprint of the former Equity Works Manufactured Gas Plant (MGP) site (the Site). The Site consists of three adjoining properties – 222 Maspeth Avenue, 252 Maspeth Avenue, and 254 Maspeth Avenue located in Brooklyn, New York. The location of the Site and the orientation of the individual properties are illustrated in Figures 1-1 and 1-2, respectively.

The IRM is being implemented pursuant to a Multi-site Order on Consent and Administrative Settlement, Index # A2-0552-0606, between The Brooklyn Union Gas Company (BUG) d/b/a National Grid NY, and the New York State Department of Environmental Conservation (NYSDEC), in accordance with applicable guidelines of the NYSDEC and the New York State Department of Health (NYSDOH).

This document is organized in the following manner: a summary of activities associated with the initial installation and operation of the recovery wells is presented in Section 2; the results from the second year's monitoring activities are documented in Section 3 and proposed revisions to the system's operation and monitoring program are discussed in Section 4.

## 2.0 Recovery Well Installation and Operation

National Grid conducted the IRM to collect recoverable NAPL while site-wide investigation and remedial alternative and design activities are completed. The design of the NAPL recovery system included the installation of 23 recovery wells at locations that were determined to have the potential to collect mobile NAPL and be compatible with Cooper Tank's construction and long-term operational activities. Consistent with the NYSDEC approved work-plan (AECOM, 2013), recovery wells were installed in the following areas of the Site:

- **On-Site**—5 recovery wells (RW-1 through 5) were installed at locations within the 252 Maspeth Avenue property.
- **Site Perimeter** —18 recovery wells (RW-6 through 23) were installed along the perimeter of the Site on the 222, 252 and 254 Maspeth Avenue properties.

Recovery well locations are shown on Figure 2-1. The perimeter locations are spaced at approximately 18 ft on center, with the exception of the area along the driveway of 254 Maspeth Avenue where the presence of a subsurface structure has required spacing of approximately 30 feet between the three recovery wells (RW-6, -7 and -8). All locations were equipped with the infrastructure, i.e., conduits for electrical service and tubing, for the subsequent automation of NAPL recovery activities,.

### 2.1 Recovery Well Designs

Recovery wells were designed to accommodate the uncertainty of long-term NAPL recovery rates. All well risers were constructed of 6-inch diameter schedule 40 polyvinyl chloride (PVC). Recovery well screens were constructed of 6-inch diameter 0.020-inch slot wire wrap stainless steel. Five (5) and ten (10 foot lengths of screen were used, as required, to address soil intervals where NAPL (i.e., saturated thickness greater than 1-inch) have been observed. Centralizers were installed at the top and bottom of each screen. The screen size was selected based on the grain-size information obtained during the Pre-Design Investigation (PDI). Each well was equipped with a 5-foot long, 6-inch diameter, stainless steel sump to collect NAPL. The annular space above the filter pack was filled with a bentonite seal (minimum of 3 to 4 feet thick). Note that additional bentonite seals were used at locations where multiple screen intervals were installed. The annular space above the bentonite seal was filled with a grout mixture from the bentonite seal to approximately one to two feet below the top of casing (TOC). Each recovery well was completed in a 4-foot by 4-foot traffic rated well vault. Illustrations of an in-place recovery well and completed well location are provided in Figure 2-2.

### 2.2 Initial Monitoring and NAPL Recovery

The NAPL recovery system is intended to operate in a manner that contains the NAPL levels at the locations within the well sumps (5 ft. in length). As part of the installation of the system, initial monitoring activities were conducted to provide a preliminary estimate of potential collection rates. The results were used to determine which locations would require automation for the cost-effective recovery of NAPL. The monitoring activities provided the ability to group the locations into three categories based on the observed recharge rates. They were grouped as follows: Primary Recovery Wells (produce approximately 1 gallon per day (gpd) of NAPL recovered; Secondary Recovery Wells



(approximately 0.1 to 0.5 gpd of NAPL recovered) and Gauging Wells (< 0.1 gpd of NAPL recovered). The distribution of wells within these categories is provided on Table 2-1.

### **2.2.1 Primary Recovery Wells**

The majority of NAPL (approximately 85 percent of total) was collected from the eight primary locations. The manual management of NAPL at these locations would require that recovery activities be conducted on a weekly basis to ensure that the storage capacity of the well sumps (approximately 7.5 gallons) not be exceeded. This frequency of monitoring/collection was not thought to be cost-effective or practical given site access issues and the level of activity on the Cooper Tank facility. As a result, the wells at these eight locations were automated by setting NAPL recovery pumps in the wells.

### **2.2.2 Secondary Recovery Wells**

Fifteen percent of the NAPL was collected from five secondary wells. The manual management of NAPL at these locations would require that recovery activities be conducted on a monthly basis to ensure that the storage capacity of the well sumps is not exceeded. Long-term manual monitoring/recovery at this frequency was not thought to be cost effective, and these locations were also automated by setting NAPL recovery pumps in the wells.

### **2.2.3 Gauging Wells**

NAPL levels at the 10 remaining wells were consistently observed to be within the wells sumps at each location. It was believed that NAPL at these locations could be effectively managed on a quarterly basis using manual recovery techniques. Note that one of the secondary wells (RW-11) was converted to a gauging well during the first year of operation, bringing the total to 11 wells.

## **2.3 System Operation**

Discussions of the recovery/collection methods more the automated and gauging wells are provided below.

### **2.3.1 Automated Wells**

The Primary and Secondary recovery well locations (Figure 2-3) are equipped with fixed speed pumps manufactured by Pump Works and/or Linear Pumps. Note that the equipment designed by Linear Pumps has been determined to be better suited to site conditions and will be used to replace the Pump Works equipment over time. The well pumps are controlled with timers that are adjusted, as required, with a goal of containing the NAPL within the sump of each well, but at a level above the inlet to the pump to minimize the collection of groundwater.

Collected NAPL is accumulated in a 500 gallon capacity double-walled polyethylene tank located above ground in the system's control trailer on the 254 parcel (Figure 2-4). The accumulation tank is equipped with a high liquid level detector to prevent over-filling, as well as secondary containment. The system is equipped with additional alarms and communication equipment to ensure its safe operation.

### **2.3.2 Gauging Wells**

The Gauging Wells are monitored during quarterly inspection activities and accumulated NAPL is recovered using an air lift system that consists of an air compressor and sample line (1 inch outside

diameter black iron pipe) that runs from the bottom of the well sump to a closed 55 gallon drum and is operated in the following manner:

- A small stream of compressed air is introduced into the bottom of the sample line through a "T" connection.
- The upward movement of the air "bubble" creates a vacuum that draws NAPL upward from the sump and into the drum.
- The consistency of the stream is observed until the fluid being removed appears to be clear (i.e., NAPL is no longer being removed). At that point, the air flow is discontinued and the volume of collected NAPL is measured and recorded.

The collected NAPL is stored in sealed drums and collected with the NAPL from the accumulation tank at regular intervals by a certified waste hauler.

## 3.0 System Performance

The following discussion provides summaries of NAPL recovery and waste management observations during the second year of system operation (June 2015 to July 2016), as well as a discussion of the associated maintenance and response activities.

### 3.1 NAPL Recovery

Monitoring and recovery activities were conducted on an approximate quarterly basis through the year. The results from the monitoring of the automated and gauging wells are discussed below.

#### 3.1.1 Automated Wells

The results from the gauging activities during the system's operation are summarized in Table 3-1. Adjustments to the pumping rates were generally appropriate to contain NAPL within the sumps of the wells. Note that the increased NAPL thickness in the majority of wells that was observed in January 2015 was due to a planned shutdown of the system to pursue regulatory approval for the shipment of collected NAPL. In early 2016, Tradebe notified National Grid that a routine analysis of the collected material indicated a flash point result that was greater than the permissible level under Resource Conservation and Recovery Act (RCRA). Experience during the first year of the operation indicated that the results of the waste analysis for flashpoint were subject to sampling variability due to the stratification of water and organic layers in the tank. Although it is likely that the elevated result was affected by the collection of the sample, National Grid opted to delay shipment of the material until a RCRA Hazardous Waste Identification Number could be obtained for the site. The ID number was obtained and the system was restarted upon the shipment of the material to Tradebe on February 5, 2016.

Approximately 9,205 gallons of mixed fluids were collected from the system during the second year of operation. An illustration of the cumulative volume of mixed fluids collected over time is provided in Figure 3-1. From startup through July 2016, approximately 11,477 gallons of mixed fluids have been removed by the system. Observation of the relative proportions of organic/water were highly variable, but suggest an increase in the water composition of the collected fluids over time. An estimate of the organic/water ratios over the current monitoring period indicates that the collected material likely contains over 6,800 gallons of NAPL assuming a NAPL to water ratio of 60:40.

#### 3.1.2 Gauging Wells

The 2015-2016 data from the gauging wells is presented in Table 3-2. As indicated, manual recovery on a quarterly basis is appropriate to maintain DNAPL levels within the sumps. During the year, approximately 120 gallons of mixed fluids were recovered from the 11 gauging wells.

Figure 3-2 presents a graphical illustration of the trend in DNAPL thickness in the "gauging" recovery wells during the first two years of operation. As illustrated, thicknesses have generally decreased over time. This fact, in conjunction with the decreasing rates of NAPL recovery at automated recovery wells, suggests that the collection system is having a potentially significant effect on reducing the quantity of source material in the areas where the gauging wells are located.

### 3.2 Waste Management

The collected NAPL is managed as an alternative fuel at the Tradebe Facility in Cohoes, New York. A summary of the waste shipments and associated quantities is presented in Table 3-3.

The initial shipments during the second year of operation were managed as a non-hazardous waste in accordance with NYSDEC Guidance DER-4, "Management of Coal Tar Waste and Coal Tar Contaminated Soils and Sediment". Shipments after February 5, 2016 were conservatively managed as a D001 Ignitable Waste using the RCRA ID number for the Site: NYR 000 225 615. Documentation of the shipments is provided in Appendix A.

### 3.3 System Maintenance

The following maintenance activities were accomplished during the second year of operation:

- A locked outdoor drum storage unit was constructed and used to store containerized NAPL recovered from the Gauging Wells pending transport.
- An additional heater was placed in the transition duct between the ground surface and the trailer to address the problem of lines freezing in extreme weather. The addition of insulation to the interior walls of the trailer was also completed.

During the reporting period (June 2015 through July 2016), the system was on-line 396 days out of a total of 426 days of operation. The 30 days off-line included the scheduled shut down referenced previously, as well as several days when the tank was at capacity and the system was shut down to accommodate the schedule for tank pump-outs. This reflects an on-line factor of 93% which is consistent with the first year of operation. There were no significant maintenance issues with the system during the monitoring period.

Access to RW-3 continues to be an issue. The anticipated paving of the 252 parcel by Cooper Tank has been delayed. Since the final grade on the 252 Parcel has not been established, the top of the vault for RW-3 continues to be exposed to excessive wear/damage from Cooper Tank operations. A temporary solution has involved temporary grading of the area around the vault and the replacement of the vault lid with steel road plate. Routine access to gauge the NAPL level has not been possible, and the vault routinely fills with soil/debris from the Cooper Tank activities. Sediment and debris removal from the RW-3 vault is completed on a quarterly basis during routine operations and maintenance activities.

### 3.4 Incidents/Unplanned Releases

There were no incidents or unplanned releases during the reporting period.

## 4.0 Recommendations for Future Operation

Additional evaluations of recharge rates and the composition of mixed fluids will be conducted to determine if it will be practical to refine the operation of the system, e.g. transition automated wells to gauging wells, over time.

- **Recharge Rates** - During the period of June 2014 through July 2016, a pilot program was initiated to evaluate the recharge rates for select wells. During the evaluation, NAPL was removed from the well and NAPL thicknesses were monitored periodically over the next 24 hours, with results reported in gallons/day. The tests were conducted during three quarterly gauging events.

The results for three wells located along the southern wall of the site (RW-81, -19 and -20) are summarized in Figure 4-1. As illustrated, NAPL recharge rates are decreasing over time, particularly in RW-18 and RW-19. An evaluation of recharge rates will be expanded to include wells within and along the eastern edge of the property during Year 3 operations.

- **Composition of Mixed Fluids** - Qualitative observations of the composition of the mixed fluids, i.e. organic and water, by volume have proved to be subjective, resulting in variable estimates of the quantity of NAPL collected. As a result, the following method for “gauging” the tank will be used consistently by field staff moving forward:
  - The tank will be accessed through the topmost access port;
  - An interface probe will be lowered to the bottom of the tank;
  - The probe will be left in place for a period of 5 minutes to allow the separate layers of NAPL and water to resolve;
  - The probe will be slowly raised until the water level is encountered;
  - The thicknesses of the NAPL and water levels will be used to estimate composition of the mixed fluids.
- **Recovery Well Redevelopment Evaluation** – An evaluation and proposed plan will be developed to evaluate redevelopment of select recovery wells to determine if there is potential well screen fouling that requires a formal redevelopment program. The plan and results will be presented to the agency for review and approval.

The results of the above actions will be reviewed as part of the next annual report to determine if there is a trend in the rate of NAPL collection and if a modification to the operation of the system or a formal recovery well development plan is warranted.

## 5.0 References

AECOM, 2011. Equity Former MGP Site 254 Maspeth Avenue Property Interim Remedial Measure Work Plan. December 16, 2011.

AECOM, 2012. Interim Site Management Plan, Equity Works Former Manufactured Gas Plant Site, Brooklyn, New York, NYSDEC Site No.: 224050, Order on Consent Index #: A2-0552-0606. November 28, 2012.

AECOM, 2015. Completion Report Interim Remedial Measure for NAPL Recovery, Equity Works Former Manufactured Gas Plant Site, Brooklyn, New York, NYSDEC Site No.: 224050, Order on Consent Index #: A2-0552-0606. May 20, 2015.

AECOM, 2015. Annual Report, Interim Remedial Measure for NAPL Recovery, Equity Works Former Manufactured Gas Plant Site, Brooklyn, New York, NYSDEC Site No.: 224050, Order on Consent Index #: A2-0552-0606. August 2015.

National Grid, 2012. National Grid Environmental Procedure 2-A, Aboveground Storage Tank Management. December 2012.

New York State Department of Environmental Conservation (NYSDEC), 2002. Management of Coal Tar Waste and Coal Tar Contaminated Soils and Sediment (DER-4). January 11, 2002.

## Tables

**Table 2-1  
Categories of Recovery Wells  
Former Equity Works MGP Site, Brooklyn, New York**

**Primary Recovery Wells (collection rate < 1 gpd)**

Well	Location	
RW-2	252 Parcel	on-site
RW-3	252 Parcel	on-site
RW-10	254 Parcel	perimeter
RW-12	254 Parcel	perimeter
RW-13	254 Parcel	perimeter
RW-18	254 Parcel	perimeter
RW-19	254 Parcel	perimeter
RW-20	254 Parcel	perimeter

**Secondary Recovery Wells (collection rates 0.1 to 0.5 gpd)**

Well	Location	
RW-8	254 Parcel	perimeter
RW-9	254 Parcel	perimeter
RW-11	254 Parcel	perimeter
RW-21	254 Parcel	perimeter
RW-22	222 Parcel	perimeter

**Gauging Wells (collection rate < 0.1 gpd)**

Well	Location	
RW-1	252 Parcel	on-site
RW-4	252 Parcel	on-site
RW-5	252 Parcel	on-site
RW-6	254 Parcel	perimeter
RW-7	254 Parcel	perimeter
RW-11	254 Parcel	perimeter
RW-14	254 Parcel	perimeter
RW-15	254 Parcel	perimeter
RW-16	254 Parcel	perimeter
RW-17	254 Parcel	perimeter
RW-23	222 Parcel	perimeter

Note:

<sup>1</sup> Based on data from initial gauging events - May 2013 through February 2014



**Table 3-1  
NAPL Monitoring and Recovery - Automated Wells  
Former Equity Works MGP Site, Brooklyn, New York**

Location		Depth of Well (ft.)		Typical Pre-Recovery						
Parcel	Well ID	Design	Measured	NAPL Thickness (ft.)	7/29/2015	10/15/2015	1/15/2016	4/28/2016	7/28/2016	
On-Site	252	<b>RW- 2</b>	51.00	49.70	12	0.06	5.43	8.98	0.55	3.42
		<b>RW- 3</b>	51.00	50.40	14	0.63	4.72	11.74	1.25	3.06
Perimeter	254	RW- 8	48.00	46.72	3	0.06	0.15	1.89	0.98	0.10
		RW- 9	50.00	48.87	6	0.06	1.73	7.32	13.50	7.78
		<b>RW- 10</b>	46.00	45.30	11	0.06	6.25	11.44	3.03	0.20
		RW- 11	46.00	45.73	8	---	---	---	---	---
		<b>RW- 12</b>	46.00	45.48	13	4.01	2.65	10.45	10.60	2.25
		<b>RW- 13</b>	46.00	45.53	12	0.06	0.35	10.51	6.01	0.1
	252	<b>RW- 18</b>	50.00	47.50	10	8.80	0.10	trace	0.10	0.10
		<b>RW- 19</b>	52.00	50.18	12	0.06	0.1	7.71	0.15	2.72
		<b>RW- 20</b>	52.00	50.75	11	9.01	1.8	2.0	1.4	2.2
		RW- 21	50.00	49.80	5	0.06	0.1	trace	8.65	0.1
222	RW- 22	46.00	42.95	8	1.88	8.34	0.57	0	0.1	
<b>Recovered Gallons (cumulative from system startup)</b>					4215	5539	7156	9277	11477	
<b>Gallons per Day</b>					11.1	12.1	13.1	14.3	15.4	

## Notes:

**Bold** Primary Recovery Wells

--- Pump from RW-11 transferred to RW-22 during 10/3/14 event

RW-11 converted to a Gauging Well

Recovered Gallons (cumulative) is total amount pumped and does not include correction factor for NAPL to water ratio

Gallons per Day does not include correction factor for NAPL to water ratio

**Table 3-2  
NAPL Monitoring and Recovery - Gauging Wells  
Former Equity Works MGP Site, Brooklyn, New York**

Location		Depth of Well (ft.)		Typical Pre-Recovery	NAPL Thickness (feet)					Mixed Fluids Quantity Recovered (gal.)					
Parcel	Well ID	Design	Measured	NAPL Thickness (ft.)	7/29/2015	10/15/2015	1/15/2016	4/28/2016	7/28/2016	7/29/2015	10/15/2015	1/15/2016	4/28/2016	7/28/2016	
On-Site	252	RW- 1	45.00	43.35	3	1.75	1.71	2.11	0.70	1.50	4.0	4.0	8.0	3.0	5.0
		RW- 4	51.00	49.91	trace	5.22	1.00	trace	trace	trace	10.0	---	0.0	0.0	0.0
		RW- 5	47.00	44.45	2	0.65	0.53	trace	0.80	1.23	2.0	3.0	0.0	3.0	5.0
Perimeter	254	RW- 6	47.00	45.72	3	2.40	2.11	3.25	2.57	2.91	5.0	4.0	6.0	7.0	7.0
		RW- 7	48.00	46.05	1	0.06	1.10	0.20	0.25	---	0.0	3.0	0.0	4.0	---
		RW- 11	46.00	45.73	4	1.75	1.93	2.23	0.80	2.25	4.0	6.0	5.0	2.0	6.0
		RW- 14	45.00	45.13	trace	0.00	0.0	0.0	0.0	0.0	0.0	0.0	0.0	0.0	0.0
		RW- 15	45.00	43.72	trace	0.00	0.0	0.0	---	trace	0.0	0.0	0.0	---	0.0
		RW- 16	50.00	49.72	1	0.06	1.13	trace	---	---	0.0	4.0	0.0	---	0.0
	RW- 17	48.00	49.60	6	4.34	4.01	4.42	4.40	4.42	8.0	8.0	8.0	12.0	10.0	
222	RW- 23	44.00	41.69	2	0.87	0.94	trace	---	---	0.0	0.0	0.0	0.0	0.0	
<b>Total</b>										33.0	32.0	27.0	31.0	33.0	
<b>Cumulative from System Startup</b>										160.0	192.0	219.0	250.0	283.0	

## Notes:

RW-11 converted to a Gauging Well during 10/3/14 event

No manual gauging and removal during June 2015 due to time/access limitation

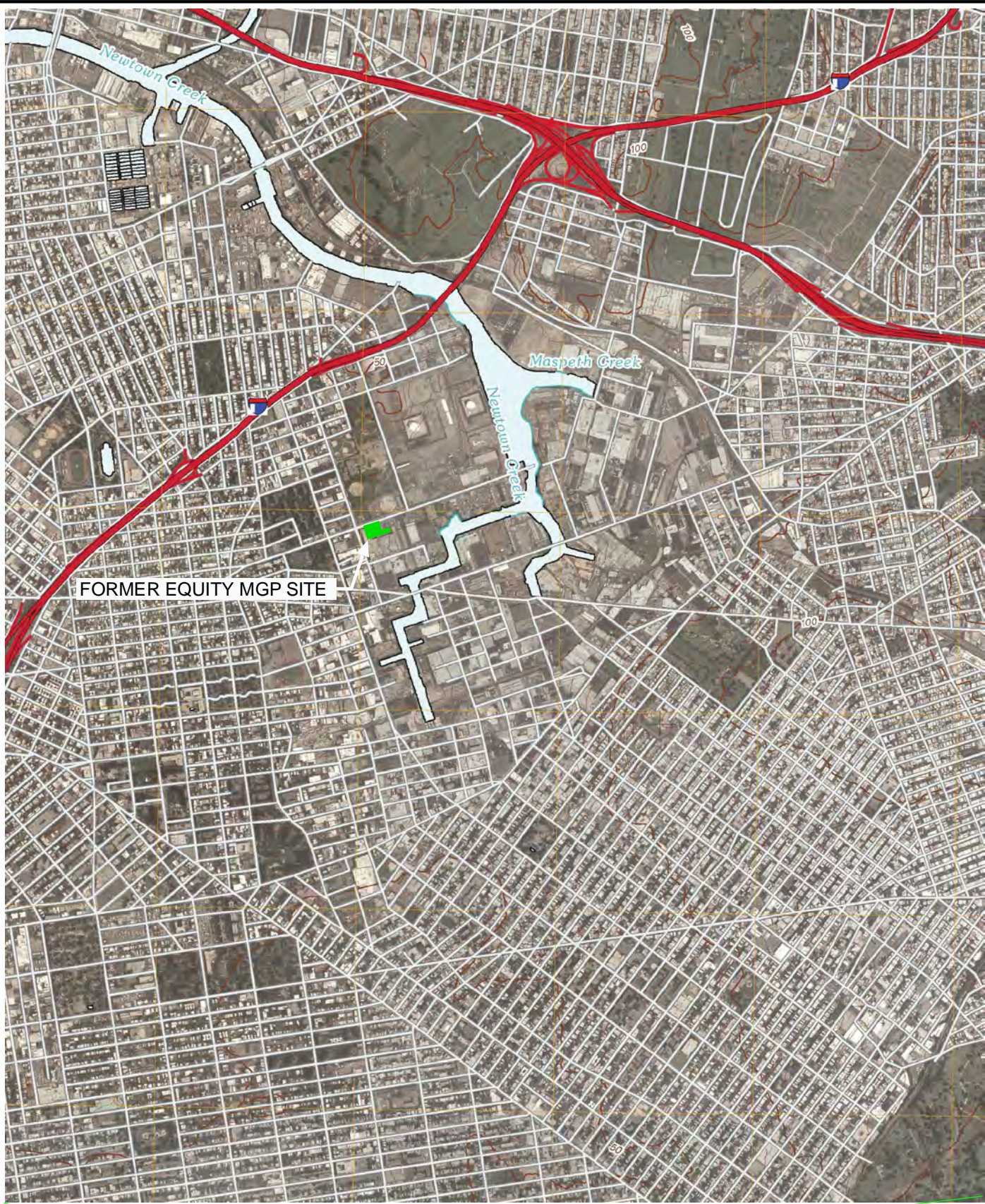
--- = Unable to access due to ongoing Cooper Tank site operations or equipment blocking recovery well that could not be moved

**Table 3-3**  
**Summary of Waste Management**  
**Former Equity Works MGP Site, Brooklyn, New York**

<b>Date</b>	<b>Quantity Shipped (gallons)</b>
6/8/2015	466
6/24/2015	490
7/9/2015	550
7/24/2015	437
8/17/2015	493
9/10/2015	335
9/29/2015	496
10/22/2015	617
11/18/2015	550
12/22/2015	450
2/5/2016	581
2/19/2016	545
3/11/2016	462
4/5/2016	533
5/2/2016	540
5/31/2016	625
6/27/2016	495
7/25/2016	540

## Figures





FORMER EQUITY MGP SITE



NATIONAL GRID  
FORMER EQUITY WORKS MGP SITE,  
BROOKLYN NY

SITE LOCATION

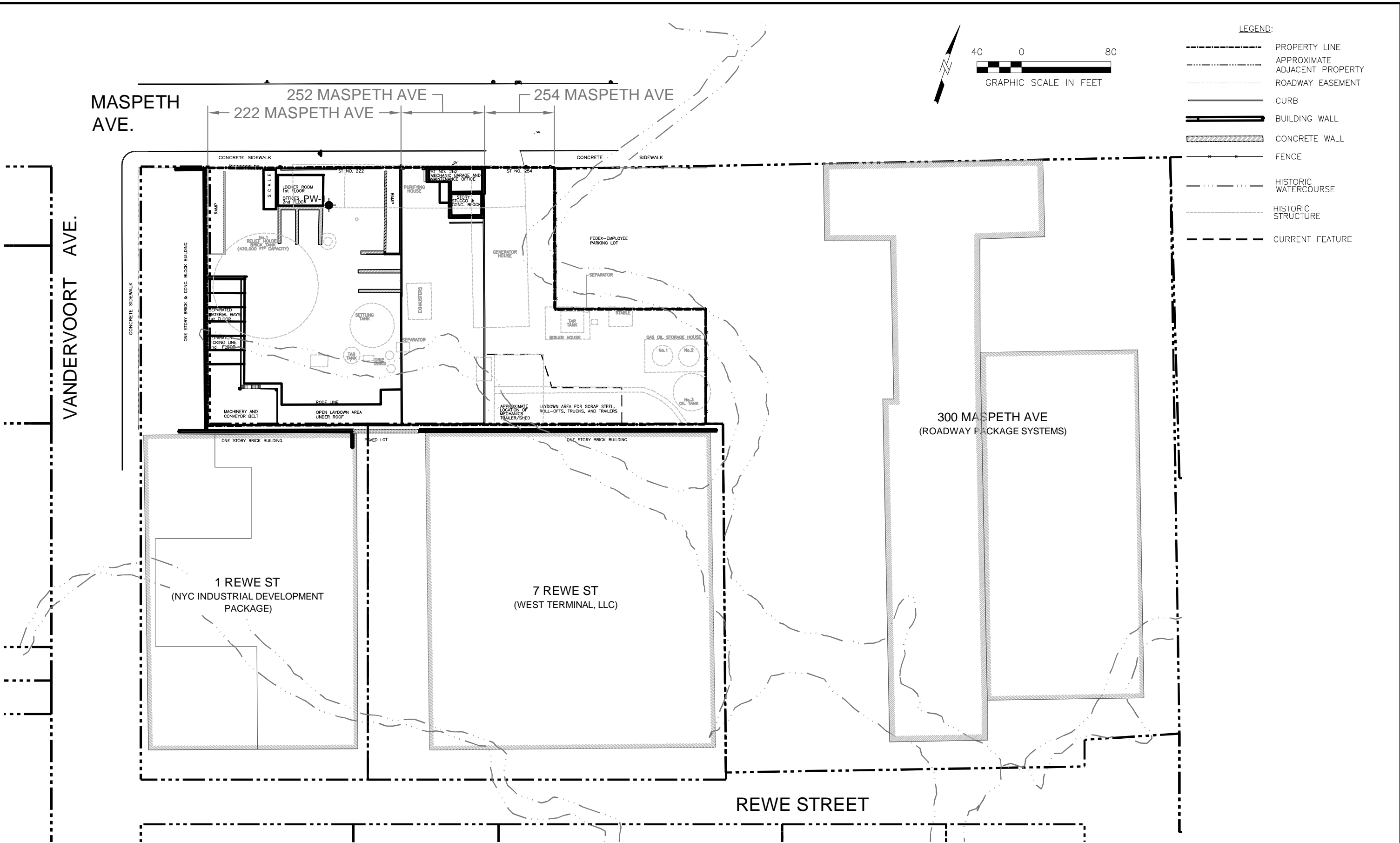
DATE: 12/2012

DRWN: BcV/C-MA

FIGURE 1-1

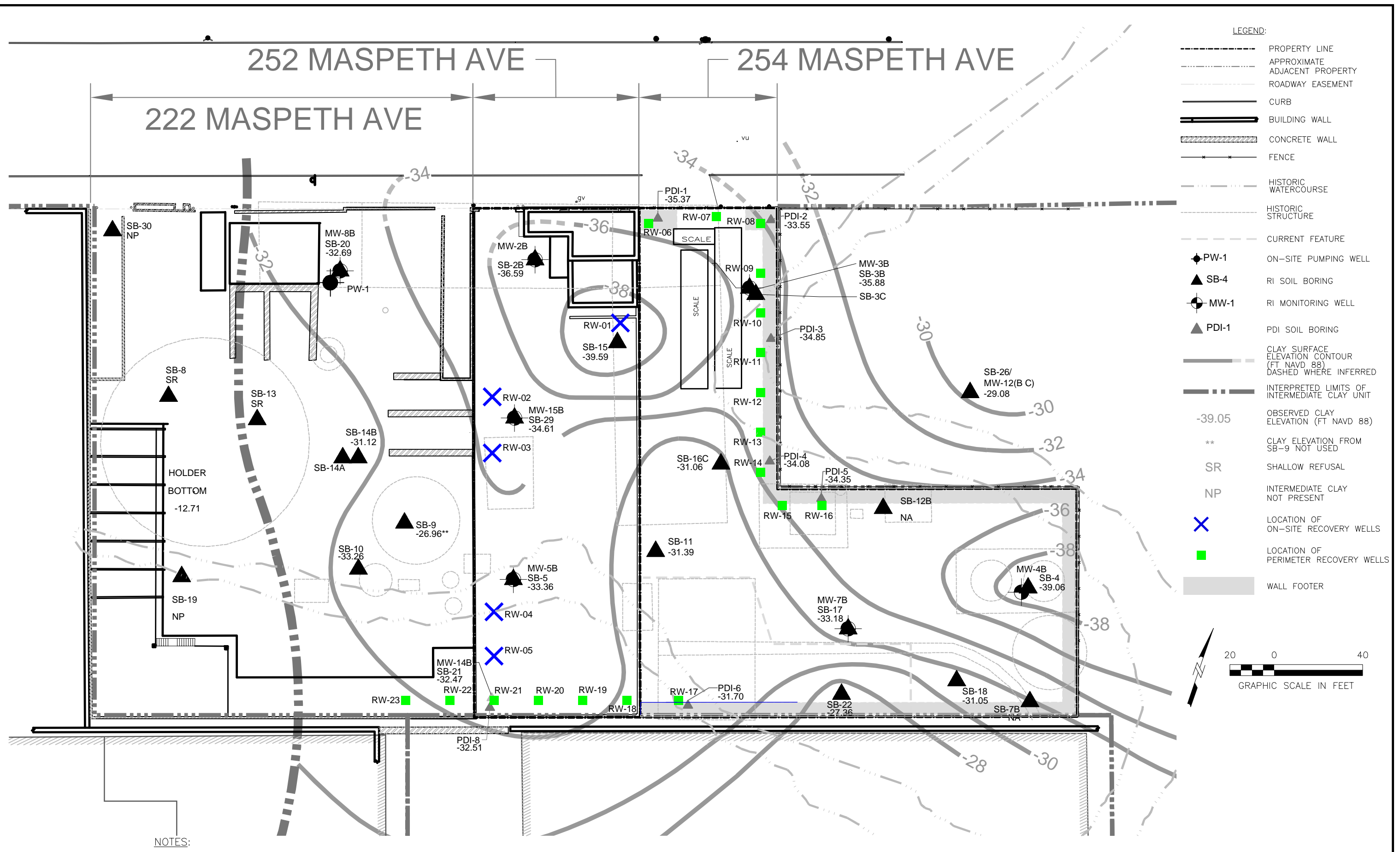


File: J:\Rem\_Eng\Project Files\National Grid\1765-076 Equity Former MGP 7.2 CADD & GIS\2012-IRM\_PRODUCT-RECOVERY\WorkPlan\_figures\60137362-660-A1.dwg Layout: Site Limits Plotted: Dec 11



NATIONAL GRID FORMER EQUITY WORKS MGP SITE, BROOKLYN NY 60137362-400		<b>SITE PROPERTIES</b>
DATE: 12/2012	DRWN: BcV/C-MA	<b>FIGURE 1-2</b>

File: J:\Rem\_Eng\Project Files\National Grid\1765-076 Equity Former MGP 7.2 CADD & GIS\2012-IRM\_PRODUCT-RECOVERY\WorkPlan\_figures\60137362-660\_45.dwg Layout: Layout1 User: vershobh Plotted: Dec 11, 2012



**NOTES:**  
 1. Final locations of proposed recovery wells will be reviewed with COOPER TANK to address facility operations and structures.



NATIONAL GRID FORMER EQUITY WORKS MGP SITE, BROOKLYN NY 60137362-400		<b>LOCATIONS OF ON-SITE AND PERIMETER RECOVERY WELLS</b>
DATE: 12/11/12	DRWN: BcV/C-MA	<b>FIGURE 2-1</b>



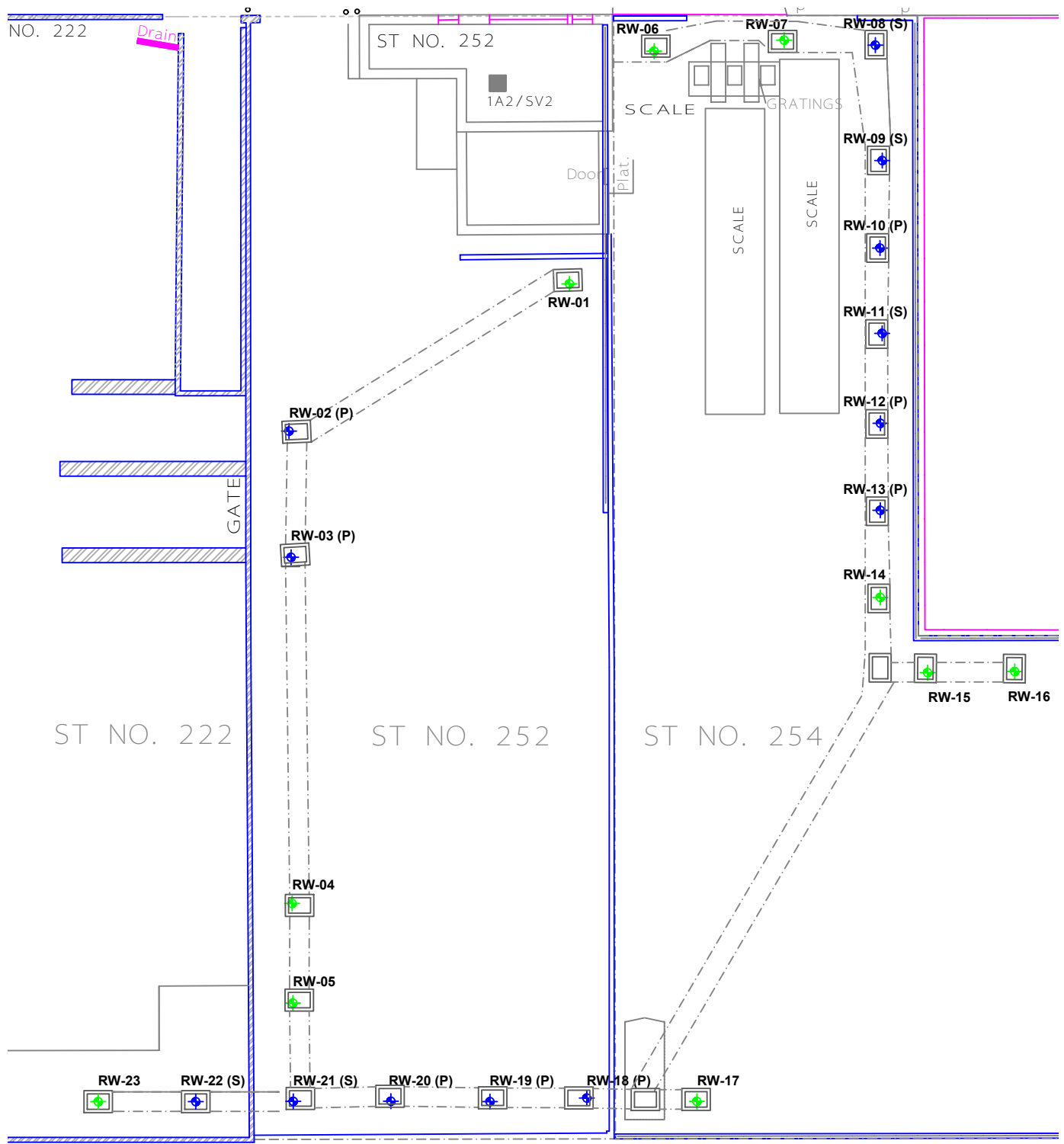
**AECOM**

NATIONAL GRID  
FORMER EQUITY WORKS MGP SITE,  
BROOKLYN, NY  
60137362.660




COMPLETED WELL  
LOCATION

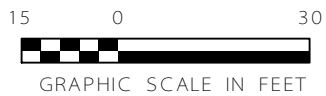
Figure 2-2





**LEGEND**

-  RW-02 (P)  
AUTOMATED WELLS - PRIMARY (APPROX. COLLECTION RATE > 1 GPD)
-  RW-08 (S)  
AUTOMATED WELLS - SECONDARY (APPROX. COLLECTION RATE 0.5-0.1 GPD)
-  RW-01  
GAUGING WELLS (APPROX. COLLECTION RATE < 0.1GPD)



NATIONAL GRID FORMER EQUITY WORKS MGP SITE, BROOKLYN NY 60137362.660		<b>LOCATION OF AUTOMATED WELLS</b>
DATE: 10/30/2013	DRWN: BcV/C-MA	<b>FIGURE 2-3</b>



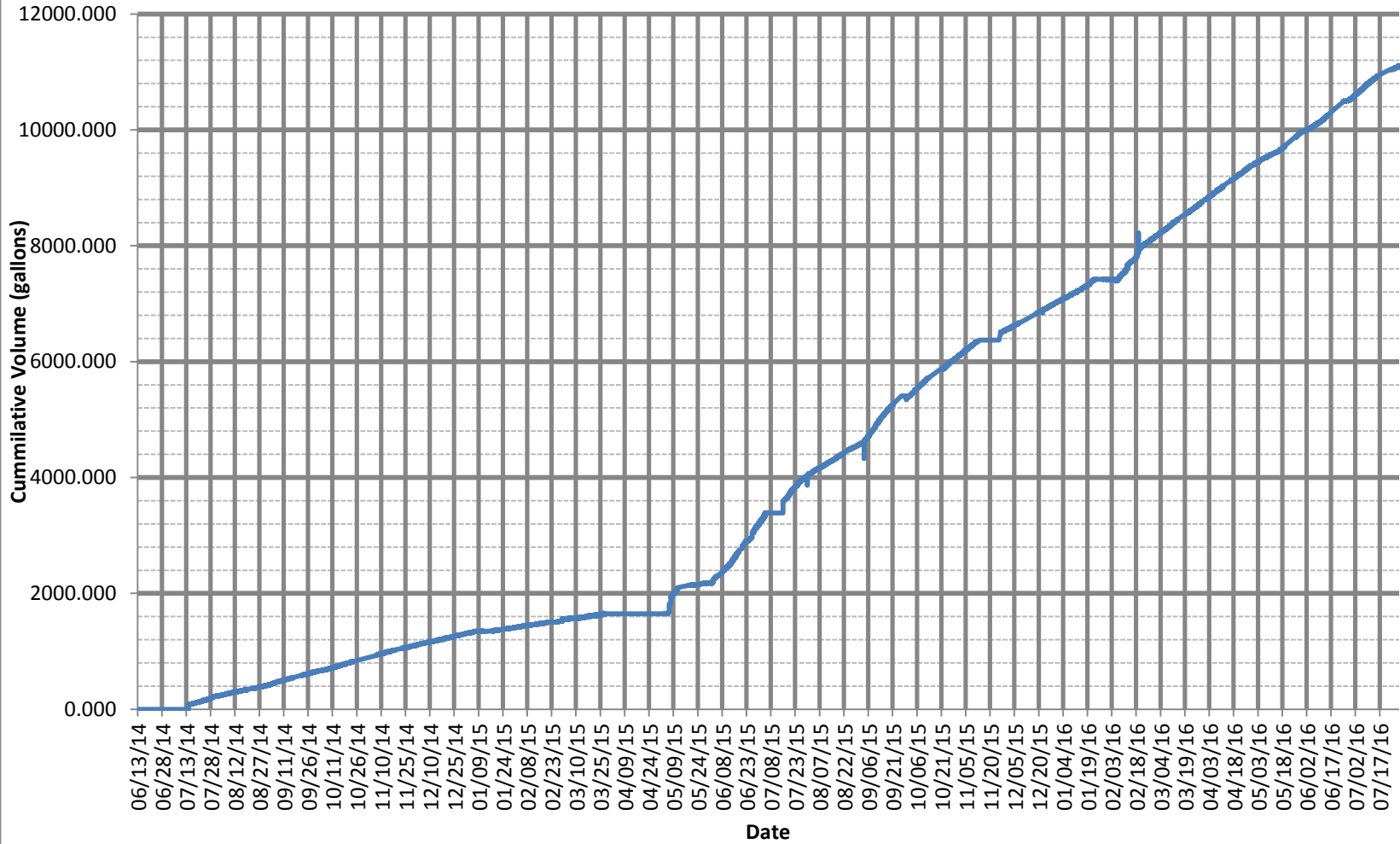
**AECOM**

NATIONAL GRID  
FORMER EQUITY WORKS MGP SITE,  
BROOKLYN, NY  
60137362.660

CONTROL TRAILER

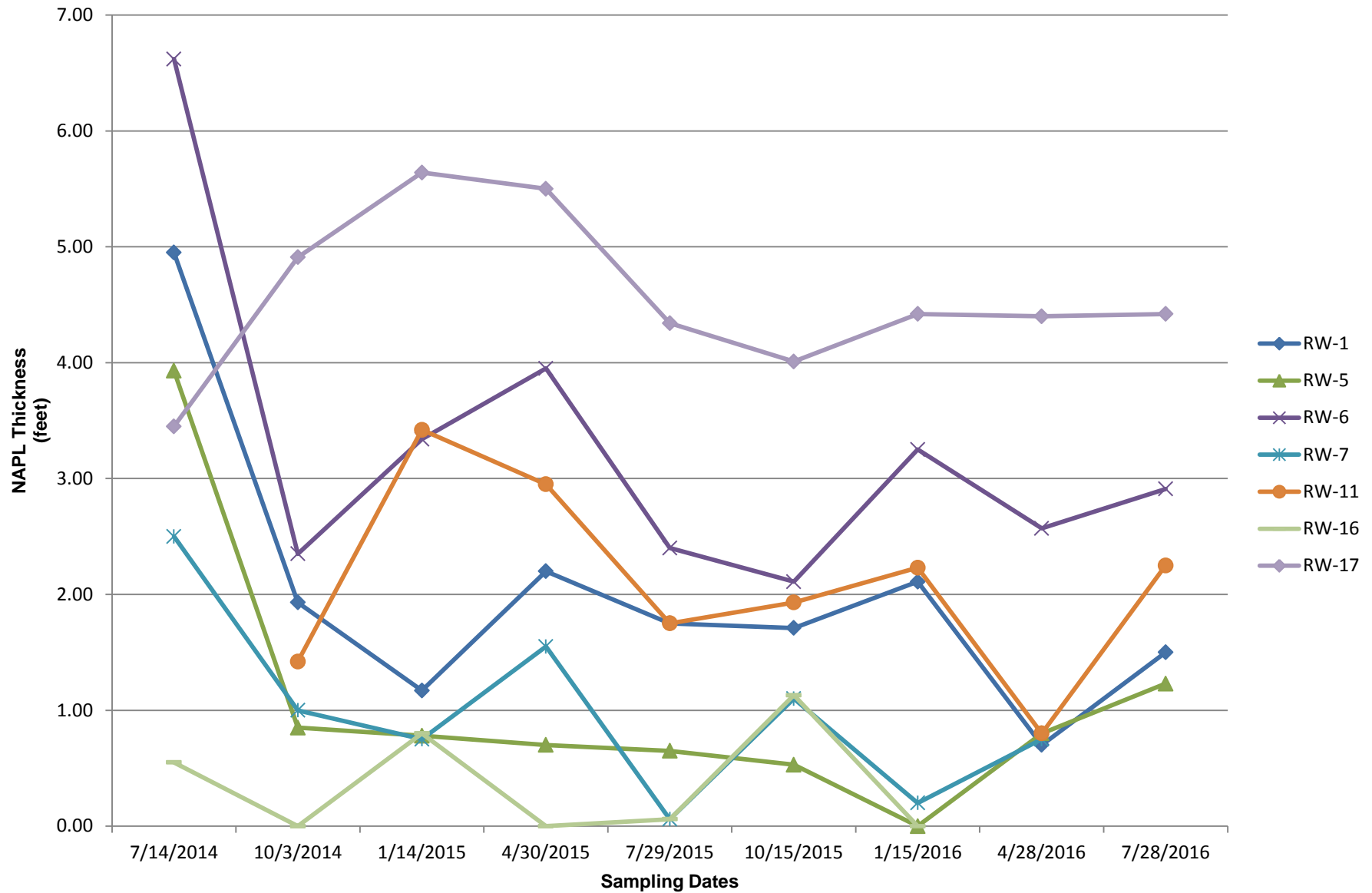
Figure 2-4

**Figure 3-1**  
**Cumulative Volume of Mixed Fluids Collected**  
**IRM for NAPL Recovery**  
**Former Equity Works MGP Site**

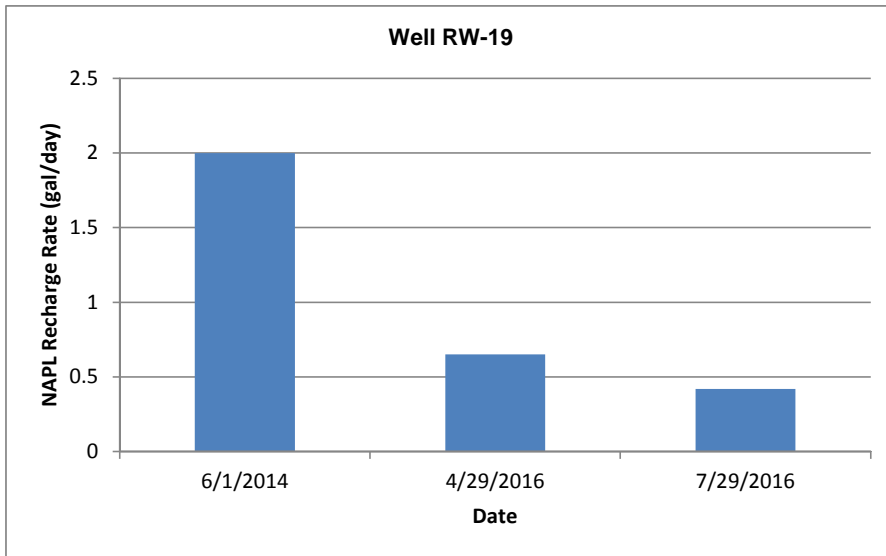
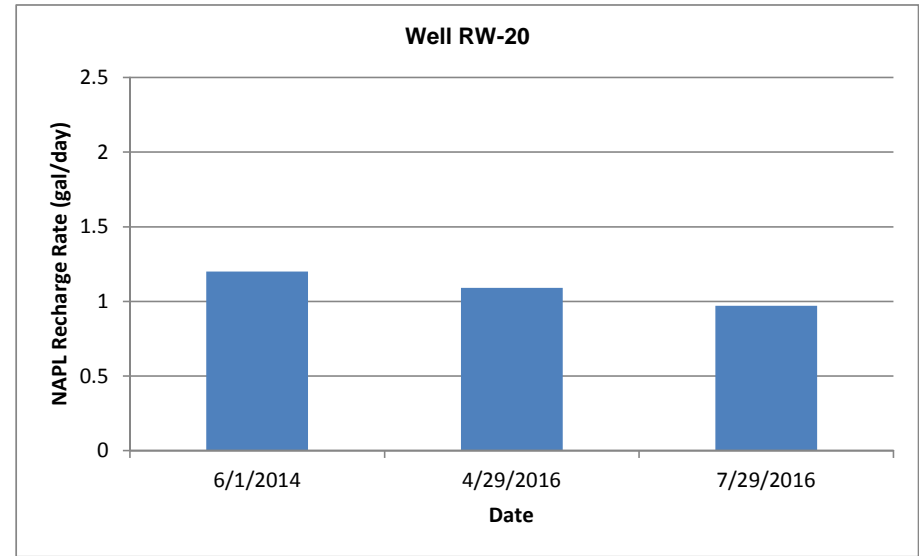
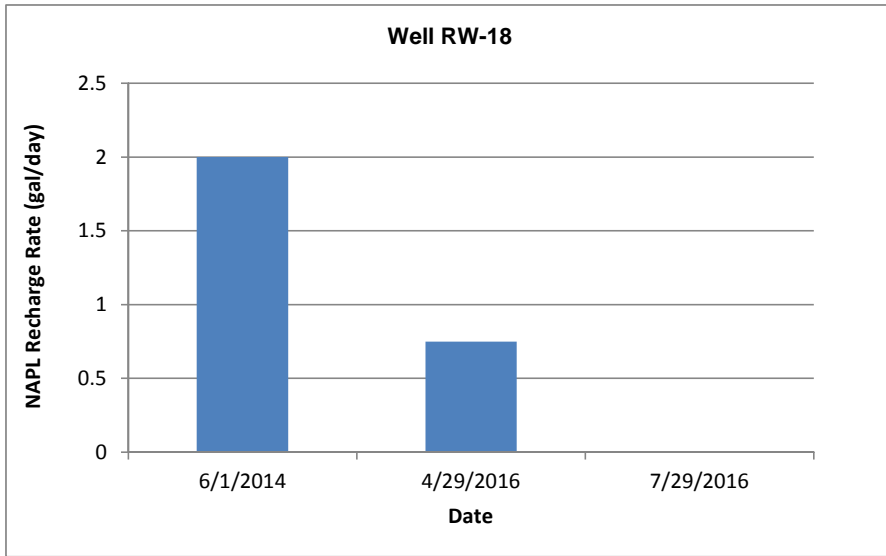


Note: Mixed Fluids are estimated to contain 60% NAPL

**Figure 3-2**  
**NAPL Thickness Versus Time - Gauging Wells**  
**Former Equity Works MGP Site, Brooklyn, New York**



**Figure 4-1**  
**NAPL Recharge Rates Versus Time - Automated Wells**  
**Former Equity Works MGP Site, Brooklyn, New York**



## **Appendix A**

### **Waste Disposal Documentation**



90107460 950118 950118

NEED COO



NON-HAZARDOUS WASTE MANIFEST		1. Generator ID Number <del>CE-3008</del> N/A	2. Page 1 of 1	3. Emergency Response Phone 2032386745	4. Waste Tracking Number 950118
5. Generator's Name and Mailing Address BROOKLYN UNION GAS D/B/A NAT'L GRID NY ONE METRO CENTER ADD B RYAN BROOKLYN, NY 11201 Generator's Phone: 516 545 2585			Generator's Site Address (if different than mailing address) FORMER EQUITY WORKS MGP SITE 254 MASPETH AVENUE BROOKLYN, NY 11211		
6. Transporter 1 Company Name HOMEWOOD DISPOSAL Tradebe Transportation, LLC			U.S. EPA ID Number N/A ONLY CTD021816889		
7. Transporter 2 Company Name			U.S. EPA ID Number		
8. Designated Facility Name and Site Address TRADEBE T&R OF BRIDGEPORT, LLC 50 CROSS STREET BRIDGEPORT, CT 06610 Facility's Phone: (203)334-1666			U.S. EPA ID Number CTD002593887		
9. Waste Shipping Name and Description		10. Containers		11. Total Quantity	12. Unit Wt./Vol.
		No.	Type		
1. NON DOT / NON RCRA REGULATED MATERIAL		1	TT	466	G CR02
2.					
3.					
4.					
13. Special Handling Instructions and Additional Information 001) ERG P082713010NO SO: 950118 3370 EQ-36 3370 EQ-36					
14. GENERATOR'S/OFFEROR'S CERTIFICATION: I hereby declare that the contents of this consignment are fully and accurately described above by the proper shipping name, and are classified, packaged, marked and labeled/picarded, and are in all respects in proper condition for transport according to applicable international and national governmental regulations.					
Generator's/Offoror's Printed/Typed Name AGENT FOR EMILIA NATIONAL GRID NY			Signature <i>[Signature]</i>		Month Day Year 6   8   15
15. International Shipments <input type="checkbox"/> Import to U.S. <input type="checkbox"/> Export from U.S. Port of entry/exit: Date leaving U.S.:					
16. Transporter Acknowledgment of Receipt of Materials					
Transporter 1 Printed/Typed Name CHRISTOPHER JACKSON			Signature <i>[Signature]</i>		Month Day Year 6   8   15
Transporter 2 Printed/Typed Name			Signature		Month Day Year
17. Discrepancy					
17a. Discrepancy Indication Space <input type="checkbox"/> Quantity <input type="checkbox"/> Type <input type="checkbox"/> Residue <input type="checkbox"/> Partial Rejection <input type="checkbox"/> Full Rejection					
Manifest Reference Number:					
17b. Alternate Facility (or Generator)			U.S. EPA ID Number		
Facility's Phone:					
17c. Signature of Alternate Facility (or Generator)			Month Day Year		
18. Designated Facility Owner or Operator. Certification of receipt of materials covered by the manifest except as noted in Item 17a					
Printed/Typed Name Sole Burgas			Signature <i>[Signature]</i>		Month Day Year 6   8   15

# Certificate of Disposal

This is to certify that materials from Brockton Union Gas on non-hazardous waste manifest number 950118 were received at Tradebe Treatment and Recycling of Bridgeport LLC. The materials were treated at our facility at 50 Cross Street, Bridgeport Connecticut. The petroleum and/or solid phase were blended with other materials and burned for its thermal value. The aqueous phase was treated by ultrafiltration, chemical precipitation and carbon absorption.

If you have any questions or would like to visit our facility, please feel free to contact us at (203) 238-6745. Thank you for choosing Tradebe Treatment and Recycling of Bridgeport LLC for your treatment and recovery needs.

Date 10-8-15

Shawn Poling  
Shawn Poling  
Facility Manager





<b>NON-HAZARDOUS WASTE MANIFEST</b>	1. Generator ID Number <del>964251</del> N/A	2. Page 1 of 1	3. Emergency Response Phone 2032396745	4. Waste Tracking Number 964251		
5. Generator's Name and Mailing Address BROOKLYN UNION GAS D/B/A NAT'L GRID NY ONE METRO CENTER BROOKLYN, NY 11201 Generator's Phone: 516 545 2518		Generator's Site Address (if different than mailing address) FORMER EQUITY WORKS MGP SITE 254 MASPETH AVENUE BROOKLYN, NY 11211				
6. Transporter 1 Company Name TRADEBE TRANSPORTATION, LLC		U.S. EPA ID Number CTD021916389				
7. Transporter 2 Company Name		U.S. EPA ID Number				
8. Designated Facility Name and Site Address TRADEBE T&R OF BRIDGEPORT, LLC 50 CROSS STREET BRIDGEPORT, CT 06610 Facility's Phone: (203)334-1566		U.S. EPA ID Number CTD002593887				
GENERATOR	9. Waste Shipping Name and Description	10. Containers		11. Total Quantity	12. Unit Wt./Vol.	
	1. NON DOT / NON RCRA REGULATED MATERIAL	No. 1	Type TT	490	5	CR02 H135
	2.					
	3.					
	4.					
13. Special Handling Instructions and Additional Information DD1) ERG P022713010NO SO: 964251  3370-E039						
14. GENERATOR'S/OFFEROR'S CERTIFICATION: I hereby declare that the contents of this consignment are fully and accurately described above by the proper shipping name, and are classified, packaged, marked and labeled/placarded, and are in all respects in proper condition for transport according to applicable international and national governmental regulations.						
Generator's/Offeror's Printed/Typed Name EMILLER NATIONAL GRID NY		Signature 		Month Day Year 6 24 15		
TRANSPORTER	15. International Shipments <input type="checkbox"/> Import to U.S. <input type="checkbox"/> Export from U.S.		Port of entry/exit: _____ Date leaving U.S.: _____			
	16. Transporter Acknowledgment of Receipt of Materials					
	Transporter 1 Printed/Typed Name CHRISTOPHER JACKSON		Signature 		Month Day Year 6 24 15	
Transporter 2 Printed/Typed Name		Signature		Month Day Year		
DESIGNATED FACILITY	17. Discrepancy					
	17a. Discrepancy Indication Space <input type="checkbox"/> Quantity <input type="checkbox"/> Type <input type="checkbox"/> Residue <input type="checkbox"/> Partial Rejection <input type="checkbox"/> Full Rejection					
	17b. Alternate Facility (or Generator)			Manifest Reference Number: _____		
	Facility's Phone: _____			U.S. EPA ID Number _____		
17c. Signature of Alternate Facility (or Generator)				Month Day Year		
18. Designated Facility Owner or Operator: Certification of receipt of materials covered by the manifest except as noted in Item 17a						
Printed/Typed Name Sally Burgess		Signature 		Month Day Year 6 24 15		



### CERTIFICATE OF DISPOSAL

To whom this may concern

This certificate is to verify that the waste described below, is handled in accordance with local, state, and federal regulations.

**Customer:**

Name: Environmental Strategies & App

Address: 495 Union Avenue, Suite 1D Middlesex , NJ 08050

<b>Facility</b>
TTR Northeast Bridgeport 50 Cross Street Bridgeport , CT 06610 EPA ID: CTD002593887

Profile	Description	Manifest	Page / Line	Weight (lb)	Hcode
P082713010NO	MGP, NON-HAZ LIQUID DNAPL (COAL TAR	964251	00001/001	3,920.000	H135

Robert O'Brien  
Executive Vice President of Operations

TRADEBE T&R OF BRIDGEPORT, LLC

Date: 06/24/2015





NON-HAZARDOUS WASTE MANIFEST	1. Generator ID Number <del>000000</del> N/A	2. Page 1 of 1	3. Emergency Response Phone 2032386745	4. Waste Tracking Number 975037
------------------------------	---	----------------	---	------------------------------------

5. Generator's Name and Mailing Address  
**BROOKLYN UNION GAS D/B/A NAT'L GRID NY**  
**ONE METRO CENTER**  
**BROOKLYN, NY 11201**  
 Generator's Phone: 718 9635407

Generator's Site Address (if different than mailing address):  
**FORMER EQUITY WORKS MGP SITE**  
**254 MASPETH AVENUE**  
**BROOKLYN, NY 11211**

6. Transporter 1 Company Name  
**TRADEBE TRANSPORTATION, LLC**

U.S. EPA ID Number  
**CTD021816889**

7. Transporter 2 Company Name

U.S. EPA ID Number

8. Designated Facility Name and Site Address  
**TRADEBE T&R OF BRIDGEPORT, LLC**  
**50 CROSS STREET**  
**BRIDGEPORT, CT 06610**  
 Facility's Phone: (203)334-1666

U.S. EPA ID Number  
**CTD002593887**

9. Waste Shipping Name and Description	10. Containers		11. Total Quantity	12. Unit Wt./Vol.	
	No.	Type			
1. <b>NON DOT / NON RCRA REGULATED MATERIAL</b>	1	TT	SSS	6	CR02 H135
2.					
3.					
4.					

13. Special Handling instructions and Additional Information  
**(001) ERG P082713010NO SO: 975037**  
 3370 EQ-40

14. GENERATOR/SOFFEROR'S CERTIFICATION: I hereby declare that the contents of this consignment are fully and accurately described above by the proper shipping name and are classified, packaged, marked and labeled/placarded, and are in all respects in proper condition for transport according to applicable international and national governmental regulations.

Generator's/Offoror's Printed/Typed Name: **Robert J. Miller** Signature: [Signature] Month: 7 Day: 19 Year: 15

15. International Shipments  Import to U.S.  Export from U.S. Port of entry/exit: Date leaving U.S.:

16. Transporter Acknowledgment of Receipt of Materials

Transporter 1 Printed/Typed Name: **Luis Cruz** Signature: [Signature] Month: 7 Day: 19 Year: 15

Transporter 2 Printed/Typed Name

17. Discrepancy  
 17a. Discrepancy Indication Space  Quantity  Type  Residue  Partial Rejection  Full Rejection

Manifest Reference Number: U.S. EPA ID Number

17b. Alternate Facility (or Generator)

Facility's Phone: 17c. Signature of Alternate Facility (or Generator)

18. Designated Facility Owner or Operator: Certification of receipt of materials covered by the manifest except as noted in item 17a  
 Printed/Typed Name: **Doreen Burgess** Signature: [Signature] Month: 7 Day: 19 Year: 15

GENERATOR  
INT'L  
TRANSPORTER  
DESIGNATED FACILITY

# Certificate of Disposal

This is to certify that materials from *Barklyn Green Area* 2004 # Nat'l Grid NY on non-hazardous waste manifest number 915137 were received at Tradebe Treatment and Recycling of Bridgeport LLC. The materials were treated at our facility at 50 Cross Street, Bridgeport Connecticut. The petroleum and/or solid phase were blended with other materials and burned for its thermal value. The aqueous phase was treated by ultrafiltration, chemical precipitation and carbon absorption.

If you have any questions or would like to visit our facility, please feel free to contact us at (203) 238-6745. Thank you for choosing Tradebe Treatment and Recycling of Bridgeport LLC for your treatment and recovery needs.

7-9-15

Date

Shawn Poling  
Shawn Poling  
Facility Manager



**NON-HAZARDOUS WASTE MANIFEST**

1. Generator ID Number: CES 40  
 2. Page 1 of 1  
 3. Emergency Response Phone: 203.238.745  
 4. Waste Tracking Number: 987443

5. Generator's Name and Mailing Address: ONE WIND CENTER, BROOKLYN, NY 11201  
 Generator's Site Address (if different than mailing address): FORMER EQUITY BUILDING PROP SITE, 254 MASPETH AVENUE, BROOKLYN, NY 11213

Generator's Phone: ATTN: BILL RYAN  
 6. Transporter 1 Company Name: TRADEBE TRANSPORTATION, LLC  
 U.S. EPA ID Number: CTD021516889

7. Transporter 2 Company Name: \_\_\_\_\_  
 U.S. EPA ID Number: \_\_\_\_\_

8. Designated Facility Name and Site Address: TRADEBE TRAF OF BRIDGEPORT, LLC, 10 CROSS STREET, BRIDGEPORT, CT 06610  
 Facility's Phone: (203) 334-1666  
 U.S. EPA ID Number: CTD002593887

9. Waste Shipping Name and Description	10. Containers		11. Total Quantity	12. Unit Wt./Vol.	13. Special Handling Instructions and Additional Information
	No.	Type			
1. HUN DOT / NON RCRA REGULATED MATERIAL	5	TT	437	G	3370 EQ-41
2.					
3.					
4.					

13. Special Handling Instructions and Additional Information: 3370 EQ-41

14. GENERATOR'S/OFFEROR'S CERTIFICATION: I hereby declare that the contents of this consignment are fully and accurately described above by the proper shipping name, and are classified, packaged, marked and labeled/placarded, and are in all respects in proper condition for transport according to applicable international and national governmental regulations.

Generator's/Offeor's Printed/Typed Name: \_\_\_\_\_ Signature: \_\_\_\_\_ Month: 7 Day: 24 Year: 15

15. International Shipments:  Import to U.S.  Export from U.S. Port of entry/exit: \_\_\_\_\_ Date leaving U.S.: \_\_\_\_\_

16. Transporter Acknowledgment of Receipt of Materials: Transporter 1 Printed/Typed Name: \_\_\_\_\_ Signature: \_\_\_\_\_ Month: 7 Day: 24 Year: 15

Transporter 2 Printed/Typed Name: \_\_\_\_\_ Signature: \_\_\_\_\_ Month: \_\_\_\_\_ Day: \_\_\_\_\_ Year: \_\_\_\_\_

17. Discrepancy: 17a. Discrepancy Indication Space  Quantity  Type  Residue  Partial Rejection  Full Rejection

Manifest Reference Number: \_\_\_\_\_ U.S. EPA ID Number: \_\_\_\_\_

17b. Alternate Facility (or Generator): \_\_\_\_\_ U.S. EPA ID Number: \_\_\_\_\_

Facility's Phone: \_\_\_\_\_ Month: \_\_\_\_\_ Day: \_\_\_\_\_ Year: \_\_\_\_\_

17c. Signature of Alternate Facility (or Generator): \_\_\_\_\_

18. Designated Facility Owner or Operator: Certification of receipt of materials covered by the manifest except as noted in Item 17a  
 Printed/Typed Name: \_\_\_\_\_ Signature: \_\_\_\_\_ Month: \_\_\_\_\_ Day: \_\_\_\_\_ Year: \_\_\_\_\_

GENERATOR  
INT'L  
TRANSPORTER  
DESIGNATED FACILITY

# Certificate of Disposal

This is to certify that materials from *Booklyn Thruw Acad* on non-hazardous waste manifest number *987441* were received at Tradebe Treatment and Recycling of Bridgeport LLC. The materials were treated at our facility at 50 Cross Street, Bridgeport Connecticut. The petroleum and/or solid phase were blended with other materials and burned for its thermal value. The aqueous phase was treated by ultrafiltration, chemical precipitation and carbon absorption.

If you have any questions or would like to visit our facility, please feel free to contact us at (203) 238-6745. Thank you for choosing Tradebe Treatment and Recycling of Bridgeport LLC for your treatment and recovery needs.

*7-24-15*

Date

*Shawn Poling*

Shawn Poling  
Facility Manager



90125886 1004571 1004571



NON-HAZARDOUS  
WASTE MANIFEST

CESQG

2. Page 1 of  
**1**

3. Emergency Response Phone  
**2032386745**

4. Waste Tracking Number  
**1004571**

5. Generator's Name and Mailing Address  
**BROOKLYN UNION GAS D/B/A NAT'L GRID  
ONE METRO CENTER  
BROOKLYN, NY 11201**

Generator's Site Address (if different than mailing address)  
**FORMER EQUITY WORKS MGP SITE  
254 MASPETH AVENUE  
BROOKLYN, NY 11211**

Generator's Phone: **978-764-4257**

6. Transporter 1 Company Name  
**TRADEBE TRANSPORTATION, LLC**

U.S. EPA ID Number  
**CTD021816889**

7. Transporter 2 Company Name

U.S. EPA ID Number

8. Designated Facility Name and Site Address  
**TRADEBE T&R OF BRIDGEPORT, LLC  
50 CROSS STREET  
BRIDGEPORT, CT 06610**

**(203)334-1666**

U.S. EPA ID Number  
**CTD002593887**

Facility's Phone:

9. Waste Shipping Name and Description

10. Containers  
No. Type

11. Total  
Quantity

12. Unit  
Wt./Vol.

**NON DOT / NON RCRA REGULATED MATERIAL**

**1**

**493**

**G**

**CR02**  
**Howl**

13. Special Handling Instructions and Additional Information  
**001) ERG P082713010NO SO: 1004571**

**3370 EQ-42**

14. GENERATOR'S/OFFEROR'S CERTIFICATION: I hereby declare that the contents of this consignment are fully and accurately described above by the proper shipping name, and are classified, packaged, marked and labeled/placarded, and are in all respects in proper condition for transport according to applicable international and national governmental regulations.

Generator's/Offor's Printed/Typed Name  
**WIRELAND EST (AGENT FOR NGC/IA)**

Signature  
*[Signature]*

Month Day Year  
**8 17 15**

15. International Shipments  Import to U.S.

Export from U.S.

Port of entry/exit:  
Date leaving U.S.:

Transporter Signature (for exports only):

16. Transporter Acknowledgment of Receipt of Materials

Transporter 1 Printed/Typed Name

Signature  
*[Signature]*

Month Day Year  
**8 17 15**

Transporter 2 Printed/Typed Name

Signature

Month Day Year

17. Discrepancy

17a. Discrepancy Indication Space  Quantity

Type

Residue

Partial Rejection

Full Rejection

Manifest Reference Number:

U.S. EPA ID Number

17b. Alternate Facility (or Generator)

Facility's Phone:

17c. Signature of Alternate Facility (or Generator)

Month Day Year

18. Designated Facility Owner or Operator Certification of receipt of materials covered by the manifest except as noted in Item 17a

Printed/Typed Name  
**Solee Burgess**

Signature  
*[Signature]*

Month Day Year  
**8 17 15**

# Certificate of Disposal

This is to certify that materials from Bartlett's Union Ave  
number 1004571 were received at Tradebe Treatment and Recycling of Bridgeport LLC.  
The materials were treated at our facility at 50 Cross Street, Bridgeport Connecticut. The  
petroleum and/or solid phase were blended with other materials and burned for its thermal  
value. The aqueous phase was treated by ultrafiltration, chemical precipitation and carbon  
absorption.

If you have any questions or would like to visit our facility, please feel free to contact us at  
(203) 238-6745. Thank you for choosing Tradebe Treatment and Recycling of Bridgeport LLC  
for your treatment and recovery needs.

8-17-15

Date

Shawn Poling

Shawn Poling  
Facility Manager





NON-HAZARDOUS WASTE MANIFEST

1. Generator ID Number

~~CR002~~ N/A

2. Page 1 of 1

3. Emergency Response Phone  
2032386745

4. Waste Tracking Number  
1022267

5. Generator's Name and Mailing Address  
BROOKLYN UNION GAS D/B/A NAT'L GRID NY  
ONE METRO CENTER ATT B RYAN  
BROOKLYN, NY 11201

Generator's Site Address (if different than mailing address)

FORMER EQUITY WORKS MGP SITE  
254 MASPETH AVENUE  
BROOKLYN, NY 11211

6. Transporter 1 Company Name

TRADEBE TRANSPORTATION, LLC

978-764-4257  
516 545 2586

U.S. EPA ID Number

CTD021816689

7. Transporter 2 Company Name

U.S. EPA ID Number

8. Designated Facility Name and Site Address

TRADEBE T&R OF BRIDGEPORT, LLC  
50 CROSS STREET  
BRIDGEPORT, CT 06610

(203)334-1666

U.S. EPA ID Number

CTD002593887

9. Waste Shipping Name and Description

1. NON DOT / NON RCRA REGULATED MATERIAL

10. Containers

No. Type

1 TT

11. Total Quantity

335

12. Unit WL/Vol.

G

CR02 H135

13. Special Handling Instructions and Additional Information

001) ERG P082713010NO SO: 1022267'

14. GENERATOR'S/OFFEROR'S CERTIFICATION: I hereby declare that the contents of this consignment are fully and accurately described above by the proper shipping name, and are classified, packaged, marked and labeled/placarded, and are in all respects in proper condition for transport according to applicable international and national governmental regulations.

Generator's/Offeror's Printed/Typed Name

AGENT FOR  
E Miller NATIONAL GRID NY

Signature

*[Signature]*

Month Day Year

9 | 10 | 15

15. International Shipments

Import to U.S.

Export from U.S.

Port of entry/exit:

Date leaving U.S.:

Transporter Signature (for exports only):

16. Transporter Acknowledgment of Receipt of Materials

Transporter 1 Printed/Typed Name

Christopher Jackson

Signature

*[Signature]*

Month Day Year

9 | 10 | 15

Transporter 2 Printed/Typed Name

Signature

Month Day Year

17. Discrepancy

17a. Discrepancy Indication Space

Quantity

Type

Residue

Partial Rejection

Full Rejection

Manifest Reference Number:

U.S. EPA ID Number

17b. Alternate Facility (or Generator)

Facility's Phone:

17c. Signature of Alternate Facility (or Generator)

Month Day Year

18. Designated Facility Owner or Operator: Certification of receipt of materials covered by the manifest except as noted in item 17a

Printed/Typed Name

Dale Burgess

Signature

*[Signature]*

Month Day Year

9 | 10 | 15

DESIGNATED FACILITY TO GENERATOR

# Certificate of Disposal

This is to certify that materials from Bonkayo Christ Akwe on non-hazardous waste manifest number 1022221 were received at Tradebe Treatment and Recycling of Bridgeport LLC. The materials were treated at our facility at 50 Cross Street, Bridgeport Connecticut. The petroleum and/or solid phase were blended with other materials and burned for its thermal value. The aqueous phase was treated by ultrafiltration, chemical precipitation and carbon absorption.

If you have any questions or would like to visit our facility, please feel free to contact us at (203) 238-6745. Thank you for choosing Tradebe Treatment and Recycling of Bridgeport LLC for your treatment and recovery needs.

9-10-15

Date

Ronnie Hazard

Ronnie Hazard  
Facility Manager



NON-HAZARDOUS WASTE MANIFEST	1. Generator ID Number CESRG N/A	2. Page 1 of 1	3. Emergency Response Phone 2032386745	4. Waste Tracking Number 1032498
------------------------------	-------------------------------------	----------------	---	-------------------------------------

5. Generator's Name and Mailing Address BROOKLYN UNION GAS D/B/A NATL GRID NY ONE METRO CENTER BROOKLYN, NY 11201 Generator's Phone: A-D W RYAN 978-764-4257	Generator's Site Address (if different than mailing address) FORMER EQUITY WORKS MGP SITE 254 MASPETH AVENUE BROOKLYN, NY 11211
--	--

6. Transporter 1 Company Name TRADEBE TRANSPORTATION, LLC	U.S. EPA ID Number CTD021816889
7. Transporter 2 Company Name	U.S. EPA ID Number

8. Designated Facility Name and Site Address TRADEBE T&R OF BRIDGEPORT, LLC 50 CROSS STREET BRIDGEPORT, CT 06610 Facility's Phone: (203)334-1666	U.S. EPA ID Number CTD002593887
--	------------------------------------

9. Waste Shipping Name and Description	10. Containers		11. Total Quantity	12. Unit Wt./Vol.	
	No.	Type			
NON DOT / NON RCRA REGULATED MATERIAL	1	TT	496	G	CR02 H135
NON DOT / NON RCRA REGULATED MATERIAL <i>gan</i>	1	TT		G	CR02
3.					
4.					

13. (Optional) Tracking Number and Additional Information  
001) ERG P062713010NG 1032498  
002) ERG P062713010NG  
3370 EQ-45

14. GENERATOR'S/OFFEROR'S CERTIFICATION: I hereby declare that the contents of this consignment are fully and accurately described above by the proper shipping name, and are classified, packaged, marked and labeled/placarded, and are in all respects in proper condition for transport according to applicable international and national governmental regulations.

Generator's/Offoror's Printed/Typed Name: *AGENT FOR EMILIA NATIONAL GRID NY* Signature: *[Signature]* Month Day Year: *9 29 15*

15. International Shipments  Import to U.S.  Export from U.S. Port of entry/exit: Date leaving U.S.:

16. Transporter Acknowledgment of Receipt of Materials  
Transporter 1 Printed/Typed Name: *CHRISTOPHER JACKSON* Signature: *[Signature]* Month Day Year: *9 29 15*  
Transporter 2 Printed/Typed Name: Signature: Month Day Year:

17. Discrepancy  
17a. Discrepancy Indication Space  Quantity  Type  Residue  Partial Rejection  Full Rejection  
Manifest Reference Number:

17b. Alternate Facility (or Generator) U.S. EPA ID Number  
Facility's Phone:  
17c. Signature of Alternate Facility (or Generator) Month Day Year:

18. Designated Facility Owner or Operator: Certification of receipt of materials covered by the manifest except as noted in Item 17a  
Printed/Typed Name: *Dale Beegs* Signature: *[Signature]* Month Day Year: *9 29 15*



# Certificate of Disposal

This is to certify that materials from Burlington Clean Area D034  
number 1032490 were received at Tradebe Treatment and Recycling of Bridgeport LLC.  
The materials were treated at our facility at 50 Cross Street, Bridgeport Connecticut. The  
petroleum and/or solid phase were blended with other materials and burned for its thermal  
value. The aqueous phase was treated by ultrafiltration, chemical precipitation and carbon  
absorption.

If you have any questions or would like to visit our facility, please feel free to contact us at  
(203) 238-6745. Thank you for choosing Tradebe Treatment and Recycling of Bridgeport LLC  
for your treatment and recovery needs.

Ronnie Hazard

Ronnie Hazard  
Facility Manager

Date

9-29-15





NON-HAZARDOUS  
WASTE MANIFEST

1. Generator ID Number  
**CE88G N/A**

2. Page 1 of **1** 3. Emergency Response Phone  
**2032386745**

4. Waste Tracking Number  
**1053456**

5. Generator's Name and Mailing Address  
**BROOKLYN UNION GAS D/B/A NAT'L GRID NY**  
**ONE METRO CENTER**  
**BROOKLYN, NY 11201**

Generator's Site Address (if different than mailing address)  
**FORMER EQUITY WORKS MGP SITE**  
**254 MASPETH AVENUE**  
**BROOKLYN, NY 11211**

Generator's Phone: **978-764-4257**

6. Transporter 1 Company Name  
**TRADEBE TRANSPORTATION, LLC**

U.S. EPA ID Number  
**CTD021816889**

7. Transporter 2 Company Name

U.S. EPA ID Number

8. Designated Facility Name and Site Address  
**TRADEBE T&R OF BRIDGEPORT, LLC**  
**50 CROSS STREET**  
**BRIDGEPORT, CT 06610**

U.S. EPA ID Number  
**CTD002593887**

Facility's Phone: **(203)354-1666**

9. Waste Shipping Name and Description

10. Containers

11. Total Quantity

12. Unit Wt./Vol.

1. **NON DOT / NON RCRA REGULATED MATERIAL**

No. **1**

Type **TT**

**617**

G

**CR02**

2. **NON DOT / NON RCRA REGULATED MATERIAL**

No. **1**

Type **TT**

**0**

G

**CR02**

3.

4.

13. Special Handling Instructions and Additional Information  
**001) ERG P082713010NO SOI 1053456**  
**002) ERG P082713010NO**

**3370 EQ-46**

14. GENERATOR'S/OFFEROR'S CERTIFICATION: I hereby declare that the contents of this consignment are fully and accurately described above by the proper shipping name, and are classified, packaged, marked and labeled/placarded, and are in all respects in proper condition for transport according to applicable international and national governmental regulations.

Generator's/Offeor's Printed/Typed Name  
**EMILIE MADONN GLED NY**

Signature

Month Day Year  
**10/22/15**

15. International Shipments  Import to U.S.  Export from U.S.

Transporter Signature (for exports only):

Port of entry/Exit:  
Date leaving U.S.:

16. Transporter Acknowledgment of Receipt of Materials

Transporter 1 Printed/Typed Name  
**Tony Yearwood**

Signature

Month Day Year  
**10/22/15**

Transporter 2 Printed/Typed Name

Signature

17. Discrepancy

17a. Discrepancy Indication Space

Quantity

Type

Residue

Partial Rejection

Full Rejection

17b. Alternate Facility (or Generator)

Manifest Reference Number:

U.S. EPA ID Number

Facility's Phone:

17c. Signature of Alternate Facility (or Generator)

Month Day Year

18. Designated Facility Owner or Operator: Certification of receipt of materials covered by the manifest except as noted in Item 17a

Printed/Typed Name  
**Deke Deays**

Signature

Month Day Year  
**10/22/15**

DESIGNATED FACILITY TO GENERATOR





Tradebe Environmental Services, LLC

1433 E 83rd Ave, Suite 200  
Merrillville, IN 46410  
www.tradebeusa.com

COD

### CERTIFICATE OF DISPOSAL

To whom this may concern

This certificate is to verify that the waste described below, is handled in accordance with local, state, and federal regulations.

**Customer:**

Name: Environmental Strategies & App

Address: 495 Union Avenue, Suite 1D Middlesex , NJ 08050

Facility
TTR Northeast Bridgeport 50 Cross Street Bridgeport , CT 06610 EPA ID: CTD002593887

Profile	Description	Manifest	Page / Line	Weight (lb)	Hcode
P082713010NO	MGP, NON-HAZ LIQUID DNAPL (COAL TAR	1053456	00001/001	4,936.000	H135

Robert O'Brien  
Executive Vice President of Operations

TRADEBE T&R OF BRIDGEPORT, LLC

Date: 10/22/2015

On behalf of its subsidiary: TTR Northeast, LLC

RESPONSIBLE SM  
RECYCLING  
A commitment to our generators  
our employees and our  
community.



90151464 1072316 1072316

*Invt B V  
to JEN 1/22/16*



NON-HAZARDOUS WASTE MANIFEST 1. Generator ID Number **EE596** N/A 2. Page 1 of **1** 3. Emergency Response Phone **2032386745** 4. Waste Tracking Number **1072316**

5. Generator's Name and Mailing Address **BROOKLYN UNION GAS D/B/A NAT'L GRID ONE METRO CENTER BROOKLYN, NY 11201** 978-764-4257  
Generator's Site Address (if different than mailing address) **FORMER EQUITY WORKS MGP SITE 254 MASPETH AVENUE BROOKLYN, NY 11211**

6. Transporter 1 Company Name **TRADEBE TRANSPORTATION, LLC** U.S. EPA ID Number **CTD021816889**

7. Transporter 2 Company Name U.S. EPA ID Number

8. Designated Facility Name and Site Address **TRADEBE T&R OF BRIDGEPORT, LLC 50 CROSS STREET BRIDGEPORT, CT 06610** (203)334-1666 U.S. EPA ID Number **CTD002593887**

9. Waste Shipping Name and Description	10. Containers		11. Total Quantity	12. Unit WL/Vol.	Other
	No.	Type			
<b>NON DOT / NON RCRA REGULATED MATERIAL</b>	<b>1</b>	<b>TT</b>	<b>550</b>	<b>G</b>	<b>CR02 #135</b>
2.					
3.					
4.					

13. Special Handling Instructions and Additional Information **001) ERG P0827/13010NO SO: 1072316**  
**3370 EQ-47**

14. GENERATOR'S/OFFEROR'S CERTIFICATION: I hereby declare that the contents of this consignment are fully and accurately described above by the proper shipping name, and are classified, packaged, marked and labeled/placarded, and are in all respects in proper condition for transport according to applicable international and national governmental regulations.

Generator's/Offeror's Printed/Typed Name **AGENT FOR XEMILLER NATIONAL GRID NY** Signature *[Signature]* Month **11** Day **18** Year **15**

15. International Shipments  Import to U.S.  Export from U.S. Port of entry/exit: Date leaving U.S.:

16. Transporter Acknowledgment of Receipt of Materials  
Transporter 1 Printed/Typed Name *[Signature]* Signature *[Signature]* Month **11** Day **18** Year **15**

Transporter 2 Printed/Typed Name Signature Month Day Year

17. Discrepancy

17a. Discrepancy Indication Space  Quantity  Type  Residue  Partial Rejection  Full Rejection

17b. Alternate Facility (or Generator) Manifest Reference Number: U.S. EPA ID Number

Facility's Phone:

17c. Signature of Alternate Facility (or Generator) Month Day Year

18. Designated Facility Owner or Operator. Certification of receipt of materials covered by the manifest except as noted in item 17a

Printed/Typed Name **Duke F. Burgess** Signature *[Signature]* Month **11** Day **18** Year **15**



# Certificate of Disposal

This is to certify that materials from Brooklyn Union Gas <sup>DBA National Grid</sup> on non-hazardous waste manifest number 1070314 were received at Tradebe Treatment and Recycling of Bridgeport LLC. The materials were treated at our facility at 50 Cross Street, Bridgeport Connecticut. The petroleum and/or solid phase were blended with other materials and burned for its thermal value. The aqueous phase was treated by ultrafiltration, chemical precipitation and carbon absorption.

If you have any questions or would like to visit our facility, please feel free to contact us at (203) 238- 6745. Thank you for choosing Tradebe Treatment and Recycling of Bridgeport LLC for your treatment and recovery needs.

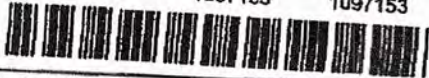
11-18-15

Date

Ronnie Hazard

Ronnie Hazard  
Facility Manager





NON-HAZARDOUS WASTE MANIFEST

1. Generator ID Number  
**CESQG**

2. Page 1 of 1

3. Emergency Response Phone  
**2032386745**

4. Waste Tracking Number  
**1097153**

5. Generator's Name and Mailing Address  
**BROOKLYN UNION GAS D/B/A NAT'L GRID  
ONE METRO CENTER  
BROOKLYN, NY 11201**

Generator's Site Address (if different than mailing address)  
**FORMER EQUITY WORKS MGP SITE  
254 MASPETH AVENUE  
BROOKLYN, NY 11211**

Generator's Phone: **978-764-4257**  
6. Transporter 1 Company Name **ATTN: Bill Ireland**  
**TRADEBE TRANSPORTATION, LLC**

U.S. EPA ID Number  
**CTD021816889**

U.S. EPA ID Number

U.S. EPA ID Number  
**CTD002593887**

7. Transporter 2 Company Name

8. Designated Facility Name and Site Address  
**TRADEBE T&R OF BRIDGEPORT, LLC  
50 CROSS STREET  
BRIDGEPORT, CT 06610**  
Facility's Phone: **(203)334-1666**

9. Waste Shipping Name and Description

10. Containers

11. Total Quantity

12. Unit Wt./Vol.

**NON DOT / NON RCRA REGULATED MATERIAL UN1136  
Waste Coal Tar Distillates, Flammable  
3, 6GTL ERG**

No. Type  
**1 TT**

**600  
450 TL  
100L**  
**G ERG2  
D001**

13. Special Handling Instructions and Additional Information  
**001 ERG P082713010NO SO: 1097153**

**337FB-48**

14. GENERATOR'S/OFFEROR'S CERTIFICATION: I hereby declare that the contents of this consignment are fully and accurately described above by the proper shipping name, and are classified, packaged, marked and labeled/placarded, and are in all respects in proper condition for transport according to applicable international and national governmental regulations.

Generator's/Offeror's Printed/Typed Name

Signature

15. International Shipments  
 Import to U.S.  
 Export from U.S.

Month Day Year  
**12 22 15**

Transporter Signature (for exports only):

Port of entry/exit:  
Date leaving U.S.:

18. Transporter Acknowledgment of Receipt of Materials

Transporter 1 Printed/Typed Name

Signature

Month Day Year  
**12 22 15**

Transporter 2 Printed/Typed Name

Signature

Month Day Year

17. Discrepancy

17a. Discrepancy Indication Space

Quantity

Type

Residue

Partial Rejection

Full Rejection

**Line 9a1 changed due to analytical results. Generator Notified**

17b. Alternate Facility (or Generator)

Manifest Reference Number:

U.S. EPA ID Number

Facility's Phone:

17c. Signature of Alternate Facility (or Generator)

Month Day Year

18. Designated Facility Owner or Generator: Certification of receipt of materials covered by the manifest except as noted in Item 17a

Printed/Typed Name

Signature

Month Day Year  
**12 22 15**

DESIGNATED FACILITY TO GENERATOR





**TRADEBE**  
Environmental Services™

## Unmanifested Waste Report

01/06/16

Dept. of Energy & Environmental Protection  
State Office Building  
79 Elm Street  
Hartford CT 06106-0127  
[DEEP.Manifests@ct.gov](mailto:DEEP.Manifests@ct.gov)

Dear Sir or Madam:

This letter is being sent to report an unmanifested shipment into our facility, Tradebe Treatment and Recycling of Bridgeport LLC, located at 50 Cross St., Bridgeport CT, EPA ID# CTD002593887, as required under 40 CFR 264.76. The material was originally thought to be non-hazardous and was received on a non-hazardous waste manifest number 1097153 on 12/22/15. Upon receiving and testing the 450 bulk gallon shipment, it was found to contain Flashpoint lower than regulatory levels. 100

The transporter is: Tradebe Transportation, LLC Services, 136 Gracey Ave., Meriden CT: CTD021816889 -  
The correct DOT shipping name should be: UN1136 Waste Coal Tar Distillates, Flammable 3, PG11 ERG 128  
The correct waste codes are: D001

The material was wastewater treated in accordance with our facility permit. The generator of the material, Brooklyn Union Gas D/B/A Nat'l Grid has been informed. Their site address/EPA has been informed. The generator has been informed that an EPAID number is required. Once the generator provides us with the EPAID I will resubmit revised letter. I have also enclosed a copy of the original non-hazardous manifest, which was initially used for the shipment. Please make the necessary changes to your record. If you have any questions, please feel free to contact me at (203) 238-6745.

I certify under penalty of law I have personally examined and am familiar with the information submitted in this document and all attachments and that based on my inquiry of those individuals directly responsible for obtaining the information, I believe that the information is true, accurate, and complete. I am aware that there are significant penalties for submitting false information, including possible fines and imprisonment.

Sincerely,

Tradebe Treatment and Recycling Northeast, LLC

Cc:  
Brooklyn Union Gas D/B/A Nat'l Grid  
One Metro Center  
Brooklyn, NY 11201



<b>UNIFORM HAZARDOUS WASTE MANIFEST</b>		1. Generator ID Number <b>CESQO NYR 0002 25615</b>		2. Page 1 of <b>1</b>		3. Emergency Response Phone <b>2032386745</b>		4. Manifest Tracking Number <b>014536988 JJK</b>			
		5. Generator's Name and Mailing Address <b>BROOKLYN UNION GAS D/B/A NAT'L GRID ONE METRO CENTER BROOKLYN, NY 11201 978-764-4257</b>						Generator's Site Address (if different than mailing address) <b>FORMER EQUITY WORKS MGP SITE 254 MASPETH AVENUE BROOKLYN, NY 11211</b>			
6. Transporter 1 Company Name <b>TRADEBE TRANSPORTATION, LLC</b>								U.S. EPA ID Number <b>CTD021816889</b>			
7. Transporter 2 Company Name								U.S. EPA ID Number			
8. Designated Facility Name and Site Address <b>TRADEBE T&amp;R OF BRIDGEPORT, LLC 50 CROSS STREET BRIDGEPORT, CT 06610 (203)334-1666</b>								U.S. EPA ID Number <b>CTD002593887</b>			
9a. HM	9b. U.S. DOT Description (including Proper Shipping Name, Hazard Class, ID Number, and Packing Group (if any))	10. Containers		11. Total Quantity	12. Unit Wt./Vol.	13. Waste Codes					
		No.	Type								
<b>X</b>	<b>UN1993 WASTE FLAMMABLE LIQUIDS, N.O.S. (COAL TAR) 3 II</b>	<b>1</b>	<b>TT</b>	<b>581</b>	<b>G</b>	<b>DD01</b>					
14. Special Handling Instructions and Additional Information <b>001) ERG 128 1000119211 SO: 1129820</b> <b>3370EQ - 48</b>											
15. GENERATOR'S/OFFEROR'S CERTIFICATION: I hereby declare that the contents of this consignment are fully and accurately described above by the proper shipping name, and are classified, packaged, marked and labeled/placarded, and are in all respects in proper condition for transport according to applicable international and national governmental regulations. If export shipment and I am the Primary Exporter, I certify that the contents of this consignment conform to the terms of the attached EPA Acknowledgment of Consent. I certify that the waste minimization statement identified in 40 CFR 262.27(a) (if I am a large quantity generator) or (b) (if I am a small quantity generator) is true.											
Generator's/Offoror's Printed/Typed Name <b>EMILLEN NATIONAL GRID NY</b>						Signature 		Month Day Year <b>10/05/16</b>			
16. International Shipments <input type="checkbox"/> Import to U.S. <input type="checkbox"/> Export from U.S. Port of entry/exit: _____ Date leaving U.S.: _____											
17. Transporter Acknowledgment of Receipt of Materials											
Transporter 1 Printed/Typed Name <b>DUSTY CURR</b>						Signature 		Month Day Year <b>12/18/16</b>			
Transporter 2 Printed/Typed Name						Signature		Month Day Year			
18. Discrepancy											
18a. Discrepancy Indication Space <input type="checkbox"/> Quantity <input type="checkbox"/> Type <input type="checkbox"/> Residue <input type="checkbox"/> Partial Rejection <input type="checkbox"/> Full Rejection											
18b. Alternate Facility (or Generator) Manifest Reference Number: _____ U.S. EPA ID Number _____											
18c. Signature of Alternate Facility (or Generator) _____ Month Day Year _____											
19. Hazardous Waste Report Management Method Codes (i.e., codes for hazardous waste treatment, disposal, and recycling systems)											
1. <b>H141</b>			2. _____			3. _____			4. _____		
20. Designated Facility Owner or Operator: Certification of receipt of hazardous materials covered by the manifest except as noted in Item 18a											
Printed/Typed Name <b>Solee Burgess</b>						Signature 		Month Day Year <b>12/15/16</b>			

DESIGNATED FACILITY TO DESTINATION STATE (IF REQUIRED)



#1129820

# Certificate of Disposal

*Burdette Union Area*

This is to certify that materials from Della North Ltd on hazardous waste manifest number 0153688 were received at Tradebe Treatment and Recycling of Bridgeport LLC. The materials were treated at our facility at 50 Cross Street, Bridgeport Connecticut. The petroleum and/or solid phase were blended with other materials and burned for its thermal value. The aqueous phase was treated by ultrafiltration, chemical precipitation and carbon absorption.

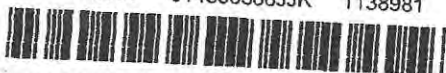
If you have any questions or would like to visit our facility, please feel free to contact us at (203) 238-6745. Thank you for choosing Tradebe Treatment and Recycling of Bridgeport LLC for your treatment and recovery needs.

2-5-16

Date

Ronnie Hazard

Ronnie Hazard  
Facility Manager



615

UNIFORM HAZARDOUS WASTE MANIFEST 1. U.S. DOT Hazard Class **CE 100** 2. Page 1 of **1** 3. Emergency Response Phone **2032386745** 4. Manifest Tracking Number **014538588 JJK**

5. Generator's Name and Mailing Address **BROOKLYN UNION GAS D/B/A NAT'L GRID ONE METRO CENTER BROOKLYN, NY 11201** 978-764-4257  
 Generator's Site Address (if different than mailing address) **FORMER EQUITY WORKS MGP SITE 254 MASPETH AVENUE BROOKLYN, NY 11211**

6. Transporter 1 Company Name **TRADEBE TRANSPORTATION, LLC** U.S. EPA ID Number **CTD021816889**

7. Transporter 2 Company Name U.S. EPA ID Number

8. Designated Facility Name and Site Address **TRADEBE T&R OF BRIDGEPORT, LLC 50 CROSS STREET BRIDGEPORT, CT 06610** (203)334-1666  
 U.S. EPA ID Number **CTD002593887**  
 Facility's Phone:

GENERATOR

9a. HM	9b. U.S. DOT Description (including Proper Shipping Name, Hazard Class, ID Number, and Packing Group (if any))	10. Containers		11. Total Quantity	12. Unit Wt./Vol.	13. Waste Codes
		No.	Type			
	<b>NON DOT / NON RCRA REGULATED MATERIAL</b>	<b>1</b>	<b>TT</b>	<b>545</b>	<b>G</b>	<b>CR02 - 8091</b>
2.						
3.						
4.						

14. ~~6021 ENG~~ **POB2713010 NO NO** **3370 EQ-50**

15. GENERATOR'S/OFFEROR'S CERTIFICATION: I hereby declare that the contents of this consignment are fully and accurately described above by the proper shipping name, and are classified, packaged, marked and labeled/placarded, and are in all respects in proper condition for transport according to applicable international and national governmental regulations. If export shipment and I am the Primary Exporter, I certify that the contents of this consignment conform to the terms of the attached EPA Acknowledgment of Consent. I certify that the waste minimization statement identified in 40 CFR 262.27(a) (if I am a large quantity generator) or (b) (if I am a small quantity generator) is true.

Generator's/Officer's Printed/Typed Name **AGENT FOR EMILLER NATIONAL GRID NY** Signature *[Signature]* Month **3** Day **19** Year **16**

TRANSPORTER INT'L

16. International Shipments  Import to U.S.  Export from U.S. Port of entry/exit: Date leaving U.S.:

17. Transporter Acknowledgment of Receipt of Materials  
 Transporter 1 Printed/Typed Name **LUIS CHUZ** Signature *[Signature]* Month **2** Day **19** Year **16**

Transporter 2 Printed/Typed Name Signature Month Day Year

DESIGNATED FACILITY

18. Discrepancy  
 18a. Discrepancy Indication Space  Quantity  Type  Residue  Partial Rejection  Full Rejection  
 Manifest Reference Number: U.S. EPA ID Number

18b. Alternate Facility (or Generator) U.S. EPA ID Number  
 Facility's Phone:

18c. Signature of Alternate Facility (or Generator) Month Day Year

19. Hazardous Waste Report Management Method Codes (i.e., codes for hazardous waste treatment, disposal, and recycling systems)  
 1. **H141** 2. 3. 4.

20. Designated Facility Owner or Operator: Certification of receipt of hazardous materials covered by the manifest except as noted in item 18a  
 Printed/Typed Name **Alce Burgos** Signature *[Signature]* Month **2** Day **19** Year **16**

# Certificate of Disposal

This is to certify that materials from Brooklyn Union Gas <sup>DBA Nat'l Grid</sup> on hazardous waste manifest number 0145385627K were received at Tradebe Treatment and Recycling of Bridgeport LLC. The materials were treated at our facility at 50 Cross Street, Bridgeport Connecticut. The petroleum and/or solid phase were blended with other materials and burned for its thermal value. The aqueous phase was treated by ultrafiltration, chemical precipitation and carbon absorption.

If you have any questions or would like to visit our facility, please feel free to contact us at (203) 238-6745. Thank you for choosing Tradebe Treatment and Recycling of Bridgeport LLC for your treatment and recovery needs.

2-19-16

Date

Ronnie Hazard

Ronnie Hazard  
Facility Manager

#1138981



UNIFORM HAZARDOUS WASTE MANIFEST		1. Generator ID Number <b>CEIS06 NYR000225615</b>	2. Page 1 of <b>1</b>	3. Emergency Response Phone <b>2032386745</b>	4. Manifest Tracking Number <b>013708715 JJK</b>		
5. Generator Name and Mailing Address <b>BROOKLYN UNION GAS D/B/A NAT'L GRID NY ONE METRO CENTER BROOKLYN, NY 11201</b>			Generator Site Address (if different than mailing address) <b>FORMER EQUITY WORKS MGP SITE 254 MASPETH AVENUE BROOKLYN, NY 11211</b>				
Generator's Phone: <b>MT Bill Ryan 516 545 2546</b>			6. Transporter 1 Company Name <b>TRADEBE TRANSPORTATION, LLC</b>		U.S. EPA ID Number <b>CTD021816889</b>		
7. Transporter 2 Company Name			7. Transporter 2 Company Name		U.S. EPA ID Number		
8. Designated Facility Name and Site Address <b>TRADEBE T&amp;R OF BRIDGEPORT, LLC 50 CROSS STREET BRIDGEPORT, CT 06610 (203)334-1666</b>			U.S. EPA ID Number <b>CTD002593887</b>				
Facility's Phone:							
GENERATOR	9a. HM	9b. U.S. DOT Description (including Proper Shipping Name, Hazard Class, ID Number, and Packing Group (if any))	10. Containers No. Type		11. Total Quantity	12. Unit Wt./Vol.	13. Waste Codes
		<b>NON DOT / NON RCRA REGULATED MATERIAL</b>	<b>1</b>	<b>TT</b>		<b>G</b>	<b>CR02</b>
		<b>NON DOT / NON RCRA REGULATED MATERIAL</b>	<b>1</b>	<b>TT</b>		<b>G</b>	<b>CR02</b>
	<b>X</b>	<b>UN1993 WASTE FLAMMABLE LIQUIDS, N.O.S. (COAL TAR) 3 II</b>	<b>1</b>	<b>TT</b>		<b>G</b>	<b>D001</b>
	4.				<b>462</b>		
14. Special Handling Instructions and Additional Information <b>001) ERG P082713010NO S01 1149705 002) ERG P082713010NO 003) ERG 128 1000119211</b>							
15. GENERATOR'S/OFFEROR'S CERTIFICATION: I hereby declare that the contents of this consignment are fully and accurately described above by the proper shipping name, and are classified, packaged, marked and labeled/placarded, and are in all respects in proper condition for transport according to applicable international and national governmental regulations. If export shipment and I am the Primary Exporter, I certify that the contents of this consignment conform to the terms of the attached EPA Acknowledgment of Consent. I certify that the waste minimization statement identified in 40 CFR 262.27(a) (if I am a large quantity generator) or (b) (if I am a small quantity generator) is true.							
Generator's/Offoror's Printed/Typed Name <b>AGENT FR EMILER NATIONAL GRID NY</b>			Signature 		Month	Day	Year
					<b>03</b>	<b>11</b>	<b>16</b>
TRANSPORTER	16. International Shipments <input type="checkbox"/> Import to U.S. <input type="checkbox"/> Export from U.S.		Port of entry/exit: Date leaving U.S.:				
	17. Transporter Acknowledgment of Receipt of Materials Transporter 1 Printed/Typed Name <b>America new</b>		Signature 		Month	Day	Year
	Transporter 2 Printed/Typed Name		Signature 		<b>3</b>	<b>11</b>	<b>16</b>
DESIGNATED FACILITY	18. Discrepancy						
	18a. Discrepancy Indication Space <input type="checkbox"/> Quantity <input type="checkbox"/> Type <input type="checkbox"/> Residue <input type="checkbox"/> Partial Rejection <input type="checkbox"/> Full Rejection						
	18b. Alternate Facility (or Generator)			Manifest Reference Number:			
	Facility's Phone:			U.S. EPA ID Number			
18c. Signature of Alternate Facility (or Generator)							
Month Day Year							
19. Hazardous Waste Report Management Method Codes (i.e., codes for hazardous waste treatment, disposal, and recycling systems)							
1.	2.	3.	4.				
<b>H135</b>							
20. Designated Facility Owner or Operator: Certification of receipt of hazardous materials covered by the manifest except as noted in item 18a							
Printed/Typed Name <b>Soke Burgos</b>		Signature 		Month	Day	Year	
				<b>3</b>	<b>11</b>	<b>16</b>	



# Certificate of Disposal

This is to certify that materials from Bartlett Linn Area  
number 013718915 were received at Tradebe Treatment and Recycling of Bridgeport LLC.  
The materials were treated at our facility at 50 Cross Street, Bridgeport Connecticut. The  
petroleum and/or solid phase were blended with other materials and burned for its thermal  
value. The aqueous phase was treated by ultrafiltration, chemical precipitation and carbon  
absorption.

If you have any questions or would like to visit our facility, please feel free to contact us at  
(203) 238-6745. Thank you for choosing Tradebe Treatment and Recycling of Bridgeport LLC  
for your treatment and recovery needs.

Date 3-11-14

Ronnie Hazard  
Ronnie Hazard  
Facility Manager



UNIFORM HAZARDOUS WASTE MANIFEST		1. Generator ID Number <b>NY R000 225 615</b>	2. Page 1 of 1	3. Emergency Response Phone <b>203 334 6745</b>	4. Manifest Tracking Number <b>014538665 JJK</b>	
5. Generator's Name and Mailing Address <b>BROOKLYN UNION GAS D/B/A NAT'L GRID NY</b> <b>ONE METRO CENTER</b> <b>BROOKLYN, NY 11201</b> <b>978-764-4257</b>						
6. Designated Facility Name and Site Address <b>TRADEBE T&amp;R OF BRIDGEPORT, LLC</b> <b>50 CROSS STREET</b> <b>BRIDGEPORT, CT 06610</b> <b>(203)334-1666</b>						
7. Transporter 1 Company Name <b>TRADEBE TRANSPORTATION, LLC</b>		U.S. EPA ID Number <b>CTD021816809</b>		7. Transporter 2 Company Name		
8. Designated Facility Name and Site Address <b>TRADEBE T&amp;R OF BRIDGEPORT, LLC</b> <b>50 CROSS STREET</b> <b>BRIDGEPORT, CT 06610</b> <b>(203)334-1666</b>		U.S. EPA ID Number <b>CTD002593887</b>		8. Designated Facility Name and Site Address		
9a. HM	9b. U.S. DOT Description (including Proper Shipping Name, Hazard Class, ID Number, and Packing Group (if any))	10. Containers		11. Total Quantity	12. Unit Wt./Vol.	13. Waste Codes
		No.	Type			
X	1. UN1993 WASTE FLAMMABLE LIQUIDS, N.O.S. (COAL TAR) 3 II	1	TT	533	6	D001
	2.					
	3.					
	4.					
14. Special Handling Instructions and Additional Information <b>001) ERG 128 1000119211 SO: 1170310</b>						
15. GENERATOR'S/OFFEROR'S CERTIFICATION: I hereby declare that the contents of this consignment are fully and accurately described above by the proper shipping name, and are classified, packaged, marked and labeled/placarded, and are in all respects in proper condition for transport according to applicable international and national governmental regulations. If export shipment and I am the Primary Exporter, I certify that the contents of this consignment conform to the terms of the attached EPA Acknowledgment of Consent. I certify that the waste minimization statement identified in 40 CFR 262.27(a) (if I am a large quantity generator) or (b) (if I am a small quantity generator) is true.						
Generator's/Offoror's Printed/Typed Name <b>EMULLEN NATIONAL GRID NY</b>		Signature <i>[Signature]</i>		Month Day Year <b>1 15 16</b>		
16. International Shipments <input type="checkbox"/> Import to U.S. <input type="checkbox"/> Export from U.S. Port of entry/exit: _____ Date leaving U.S.: _____						
17. Transporter Acknowledgment of Receipt of Materials Transporter 1 Printed/Typed Name <b>DAVIS CURE</b> Signature <i>[Signature]</i> Month Day Year <b>1 15 16</b>						
Transporter 2 Printed/Typed Name Signature <i>[Signature]</i> Month Day Year						
18. Discrepancy 18a. Discrepancy Indication Space <input type="checkbox"/> Quantity <input type="checkbox"/> Type <input type="checkbox"/> Residue <input type="checkbox"/> Partial Rejection <input type="checkbox"/> Full Rejection Manifest Reference Number: _____ U.S. EPA ID Number: _____						
18b. Alternate Facility (or Generator) Facility's Phone: _____ U.S. EPA ID Number: _____						
18c. Signature of Alternate Facility (or Generator) Signature: _____ Month Day Year						
19. Hazardous Waste Report Management Method Codes (i.e., codes for hazardous waste treatment, disposal, and recycling systems) 1. <b>H35</b> 2. 3. 4.						
20. Designated Facility Owner or Operator Certification of receipt of hazardous materials covered by the manifest except as noted in item 18a Printed/Typed Name <b>JOKE BURGOS</b> Signature <i>[Signature]</i> Month Day Year <b>1 15 16</b>						

GENERATOR  
TRANSPORTER INTL  
DESIGNATED FACILITY

# Certificate of Disposal

This is to certify that materials from Barklyn Main Area on hazardous waste manifest number ~~0145-3844~~ were received at Tradebe Treatment and Recycling of Bridgeport LLC. The materials were treated at our facility at 50 Cross Street, Bridgeport Connecticut. The petroleum and/or solid phase were blended with other materials and burned for its thermal value. The aqueous phase was treated by ultrafiltration, chemical precipitation and carbon absorption.

If you have any questions or would like to visit our facility, please feel free to contact us at (203) 238-6745. Thank you for choosing Tradebe Treatment and Recycling of Bridgeport LLC for your treatment and recovery needs.

4-5-16

Date

Ronnie Hazard

Ronnie Hazard  
Facility Manager

<b>UNIFORM HAZARDOUS WASTE MANIFEST</b>	1. Generator ID Number <b>NYR000225615</b>	2. Page 1 of <b>1</b>	3. Emergency Response Phone <b>8448738723</b>	4. Manifest Tracking Number <b>014538771 JJK</b>
---	---	--------------------------	--	---

5. Generator's Name and Mailing Address <b>BROOKLYN UNION GAS D/B/A NAT'L GRID NY ONE METRO CENTER BROOKLYN, NY 11201</b>	Generator's Site Address (if different than mailing address) <b>FORMER EQUITY WORKS MGP SITE 254 MASPETH AVENUE BROOKLYN, NY 11211</b>
Generator's Phone: <b>FT 8, RYAN 978-764-4257</b>	

6. Transporter 1 Company Name <b>TRADEBE TRANSPORTATION, LLC</b>	U.S. EPA ID Number <b>CTD021816889</b>
---	---

7. Transporter 2 Company Name	U.S. EPA ID Number
-------------------------------	--------------------

8. Designated Facility Name and Site Address <b>TRADEBE T&amp;R OF BRIDGEPORT, LLC 50 CROSS STREET BRIDGEPORT, CT 06610</b>	U.S. EPA ID Number <b>CTD002593887</b>
Facility's Phone: <b>(203)334-1666</b>	

GENERATOR

9a. HM	9b. U.S. DOT Description (including Proper Shipping Name, Hazard Class, ID Number, and Packing Group (if any))	10. Containers		11. Total Quantity	12. Unit WL/Vol	13. Waste Codes
		No.	Type			
<b>X</b>	<b>UN1993 WASTE FLAMMABLE LIQUIDS, N.O.S. (COAL TAR) 3 II</b>	<b>1</b>	<b>TT</b>	<b>540</b>	<b>5</b>	<b>D001</b>
2.						
3.						
4.						

14. Special Handling Instructions and Additional Information <b>001) ERG 128 1000119211 SO: 1193227</b>
--

15. GENERATOR'S/OFFEROR'S CERTIFICATION: I hereby declare that the contents of this consignment are fully and accurately described above by the proper shipping name, and are classified, packaged, marked and labeled/placarded, and are in all respects in proper condition for transport according to applicable international and national governmental regulations. If export shipment and I am the Primary Exporter, I certify that the contents of this consignment conform to the terms of the attached EPA Acknowledgment of Consent. I certify that the waste minimization statement identified in 40 CFR 262.27(a) (if I am a large quantity generator) or (b) (if I am a small quantity generator) is true.

Generator's/Officer's Printed/Typed Name <b>ALAN FOR NATIONA GRID NY</b>	Signature 	Month <b>15</b>	Day <b>12</b>	Year <b>16</b>
---	---------------	--------------------	------------------	-------------------

TRANSPORTER

16. International Shipments <input type="checkbox"/> Import to U.S. <input type="checkbox"/> Export from U.S.	Port of entry/exit Date leaving U.S.:
--	--

17. Transporter Acknowledgment of Receipt of Materials				
Transporter 1 Printed/Typed Name <b>CHRIS LUIS</b>	Signature 	Month <b>15</b>	Day <b>12</b>	Year <b>16</b>
Transporter 2 Printed/Typed Name	Signature	Month	Day	Year

DESIGNATED FACILITY

18. Discrepancy				
18a. Discrepancy Indication Space <input type="checkbox"/> Quantity <input type="checkbox"/> Type <input type="checkbox"/> Residue <input type="checkbox"/> Partial Rejection <input type="checkbox"/> Full Rejection				

18b. Alternate Facility (or Generator)	U.S. EPA ID Number
Facility's Phone:	

18c. Signature of Alternate Facility (or Generator)	Month Day Year
---	----------------

19. Hazardous Waste Report Management Method Codes (i.e., codes for hazardous waste treatment, disposal, and recycling systems)			
1. <b>H135</b>	2.	3.	4.

20. Designated Facility Owner or Operator: Certification of receipt of hazardous materials covered by the manifest except as noted in Item 7a			
Printed/Typed Name <b>Christina Gaccia</b>	Signature 	Month <b>10</b>	Day Year <b>02 16</b>

# Certificate of Disposal

This is to certify that materials from *Barklyn Truck Area* on hazardous waste manifest number *0143877107* were received at Tradebe Treatment and Recycling of Bridgeport LLC. The materials were treated at our facility at 50 Cross Street, Bridgeport Connecticut. The petroleum and/or solid phase were blended with other materials and burned for its thermal value. The aqueous phase was treated by ultrafiltration, chemical precipitation and carbon absorption.

If you have any questions or would like to visit our facility, please feel free to contact us at (203) 238-6745. Thank you for choosing Tradebe Treatment and Recycling of Bridgeport LLC for your treatment and recovery needs.

*5-2-16*

Date

*Ronnie Hazard*  
Ronnie Hazard  
Facility Manager





<b>UNIFORM HAZARDOUS WASTE MANIFEST</b>		1. Generator ID number <b>NYR000225615</b>	2. Page 1 of <b>1</b>	3. Emergency Response Phone <b>8448738723</b>	4. Manifest Tracking Number <b>015042249 JJK</b>	
5. Generator's Name and Mailing Address <b>BROOKLYN UNION GAS D/B/A NATL GRID NY ONE METRO CENTER BROOKLYN, NY 11201</b>			Generator's Site Address (if different than mailing address) <b>FORMER EQUITY WORKS MGP SITE 254 MASPETH AVENUE BROOKLYN, NY 11211</b>			
Generator's Phone: <b>ROSS M 978-764-4257</b>						
6. Transporter 1 Company Name <b>TRADEBE TRANSPORTATION, LLC</b>				U.S. EPA ID Number <b>CTD021816589</b>		
7. Transporter 2 Company Name				U.S. EPA ID Number		
8. Designated Facility Name and Site Address <b>TRADEBE TAR OF BRIDGEPORT, LLC 50 CROSS STREET BRIDGEPORT, CT 06610</b>				U.S. EPA ID Number <b>CTD002593887</b>		
Facility's Phone: <b>(203) 824-1666</b>						
9a. HM	9b. U.S. DOT Description (including Proper Shipping Name, Hazard Class, ID Number, and Packing Group (if any))	10. Containers		11. Total Quantity	12. Unit WL/Vol.	13. Waste Codes
		No.	Type			
X	UN1993 WASTE FLAMMABLE LIQUIDS, N.O.S. (COAL TAR) 3 II	1	TT	625	G	D001
14. Special Handling Instructions and Additional Information <b>OUT, ERG 128 1000119211 50; 1214818</b>						
15. GENERATOR'S/OFFEROR'S CERTIFICATION: I hereby declare that the contents of this consignment are fully and accurately described above by the proper shipping name, and are classified, packaged, marked and labeled/placarded, and are in all respects in proper condition for transport according to applicable international and national governmental regulations. If export shipment and I am the Primary Exporter, I certify that the contents of this consignment conform to the terms of the attached EPA Acknowledgment of Consent. I certify that the waste minimization statement identified in 40 CFR 262.27(a) (if I am a large quantity generator) or (b) (if I am a small quantity generator) is true.						
Generator's/Officer's Printed/Typed Name <b>AGENT FOR EMILKA NATIONAL GRID NY</b>				Signature <i>[Signature]</i>		Month Day Year <b>5   31   16</b>
16. International Shipments <input type="checkbox"/> Import to U.S. <input type="checkbox"/> Export from U.S. Port of entry/exit: _____ Date leaving U.S.: _____						
17. Transporter Acknowledgment of Receipt of Materials						
Transporter 1 Printed/Typed Name <b>William Gonzalez</b>				Signature <i>[Signature]</i>		Month Day Year <b>5   31   16</b>
Transporter 2 Printed/Typed Name				Signature		Month Day Year
18. Discrepancy						
18a. Discrepancy Indication Space <input type="checkbox"/> Quantity <input type="checkbox"/> Type <input type="checkbox"/> Residue <input type="checkbox"/> Partial Rejection <input type="checkbox"/> Full Rejection						
Manifest Reference Number: _____ U.S. EPA ID Number _____						
18b. Alternate Facility (or Generator) _____ U.S. EPA ID Number _____						
Facility's Phone: _____						
18c. Signature of Alternate Facility (or Generator)						Month Day Year
19. Hazardous Waste Report Management Method Codes (i.e., codes for hazardous waste treatment, disposal, and recycling systems)						
1. <b>H135</b>		2.		3.		4.
20. Designated Facility Owner or Operator - Certification of receipt of hazardous materials covered by the manifest except as noted in item 18a						
Printed/Typed Name <b>Duke Burgess</b>				Signature <i>[Signature]</i>		Month Day Year <b>5   31   16</b>

# Certificate of Disposal

This is to certify that materials from Bonklyn Hair Care on hazardous waste manifest number ~~043018229007~~ were received at Tradebe Treatment and Recycling of Bridgeport LLC. The materials were treated at our facility at 50 Cross Street, Bridgeport Connecticut. The petroleum and/or solid phase were blended with other materials and burned for its thermal value. The aqueous phase was treated by ultrafiltration, chemical precipitation and carbon absorption.

If you have any questions or would like to visit our facility, please feel free to contact us at (203) 238-6745. Thank you for choosing Tradebe Treatment and Recycling of Bridgeport LLC for your treatment and recovery needs.

5-31-16

Date

Ronnie Hazard

Ronnie Hazard  
Facility Manager

<b>UNIFORM HAZARDOUS WASTE MANIFEST</b>	1. Generator ID Number <b>NYR000225615</b>	2. Page 1 of <b>1</b>	3. Emergency Response Phone <b>8448738723</b>	4. Manifest Tracking Number <b>015980035 JJK</b>
---	---	--------------------------	--	---

5. Generator's Name and Mailing Address <b>BROOKLYN UNION GAS D/B/A NAT'L GRID ONE METRO CENTER BROOKLYN, NY 11201 Generator's Phone: 978-764-4257</b>	Generator's Site Address (if different than mailing address) <b>FORMER EQUITY WORKS MGP SITE 254 MASPETH AVENUE BROOKLYN, NY 11211</b>
---	---

6. Transporter 1 Company Name <b>TRADEBE TRANSPORTATION, LLC</b>	U.S. EPA ID Number <b>CTD021816889</b>
---	---

7. Transporter 2 Company Name	U.S. EPA ID Number
-------------------------------	--------------------

8. Designated Facility Name and Site Address <b>TRADEBE T&amp;R OF BRIDGEPORT, LLC 50 CROSS STREET BRIDGEPORT, CT 06610 Facility's Phone: (203)334-1666</b>	U.S. EPA ID Number <b>CTD002593887</b>
--	---

9a. HM	9b. U.S. DOT Description (including Proper Shipping Name, Hazard Class, ID Number, and Packing Group (if any))	10. Containers		11. Total Quantity	12. Unit WL/Vol.	13. Waste Codes
		No.	Type			
<b>X</b>	<b>UN1993 WASTE FLAMMABLE LIQUIDS, N.O.S. (COAL TAR) 3 II</b>	<b>1</b>	<b>TT</b>	<b>495</b>	<b>G</b>	<b>D001</b>

14. Special Handling Instructions and Additional Information  
**001) ERG 128 1000119211 SO: 1234173**

15. GENERATOR'S/OFFEROR'S CERTIFICATION: I hereby declare that the contents of this consignment are fully and accurately described above by the proper shipping name, and are classified, packaged, marked and labeled/placarded, and are in all respects in proper condition for transport according to applicable international and national governmental regulations. If export shipment and I am the Primary Exporter, I certify that the contents of this consignment conform to the terms of the attached EPA Acknowledgment of Consent. I certify that the waste minimization statement identified in 40 CFR 262.27(a) (if I am a large quantity generator) or (b) (if I am a small quantity generator) is true.

Generator's/Offerior's Printed/Typed Name <b>ALBERT FOR MILICA NATIONAL GRID CT</b>	Signature 	Month Day Year <b>16 02 16</b>
--	---------------	-----------------------------------

16. International Shipments  Import to U.S.  Export from U.S. Port of entry/exit: \_\_\_\_\_ Date leaving U.S.: \_\_\_\_\_

17. Transporter Acknowledgment of Receipt of Materials	Signature	Month Day Year
Transporter 1 Printed/Typed Name <b>LOS CHUR</b>		
Transporter 2 Printed/Typed Name	Signature	Month Day Year <b>16 02 16</b>

18. Discrepancy

18a. Discrepancy Indication Space  Quantity  Type  Residue  Partial Rejection  Full Rejection

Manifest Reference Number: \_\_\_\_\_

18b. Alternate Facility (or Generator) \_\_\_\_\_ U.S. EPA ID Number \_\_\_\_\_

Facility's Phone: \_\_\_\_\_

18c. Signature of Alternate Facility (or Generator) \_\_\_\_\_ Month Day Year \_\_\_\_\_

19. Hazardous Waste Report Management Method Codes (i.e., codes for hazardous waste treatment, disposal, and recycling systems)

1. <b>H135</b>	2. _____	3. _____	4. _____
----------------	----------	----------	----------

20. Designated Facility Owner or Operator: Certification of receipt of hazardous materials covered by the manifest except as noted in Item 18a	Signature	Month Day Year
Printed/Typed Name <b>Solee Burgos</b>		<b>16 12 14</b>

# Certificate of Disposal

This is to certify that materials from Barklyn Hair Spa on hazardous waste manifest number 01598841-77 were received at Tradebe Treatment and Recycling of Bridgeport LLC.

The materials were treated at our facility at 50 Cross Street, Bridgeport Connecticut. The petroleum and/or solid phase were blended with other materials and burned for its thermal value. The aqueous phase was treated by ultrafiltration, chemical precipitation and carbon absorption.

If you have any questions or would like to visit our facility, please feel free to contact us at (203) 238-6745. Thank you for choosing Tradebe Treatment and Recycling of Bridgeport LLC for your treatment and recovery needs.

6-27-16

Date

Ronnie Hazard

Ronnie Hazard  
Facility Manager



UNIFORM HAZARDOUS WASTE MANIFEST	1. Generator ID Number <b>NYR000225615</b>	2. Page 1 of <b>1</b>	3. Emergency Response Phone <b>8448738723</b>	4. Manifest Tracking Number <b>013708937 JJK</b>
----------------------------------	---	--------------------------	--	---

5. Generator's Name and Mailing Address <b>BROOKLYN UNION GAS D/B/A NAT'L GRID NY</b> <b>ONE METRO CENTER</b> Bill R. [unclear] <b>BROOKLYN, NY 11201</b> Generator's Phone: <b>978-764-4257</b>	Generator's Site Address (if different than mailing address) <b>FORMER EQUITY WORKS MGP SITE</b> <b>254 MASPETH AVENUE</b> <b>BROOKLYN, NY 11211</b>
--	---

6. Transporter 1 Company Name <b>TRADEBE TRANSPORTATION, LLC</b>	U.S. EPA ID Number <b>CTD021816889</b>
---	---

7. Transporter 2 Company Name	U.S. EPA ID Number
-------------------------------	--------------------

8. Designated Facility Name and Site Address <b>TRADEBE T&amp;R OF BRIDGEPORT, LLC</b> <b>50 CROSS STREET</b> <b>BRIDGEPORT, CT 06610</b> Facility's Phone: <b>(203)334-1666</b>	U.S. EPA ID Number <b>CTD002593887</b>
--	---

9a. HM	9b. U.S. DOT Description (including Proper Shipping Name, Hazard Class, ID Number, and Packing Group (if any))	10. Containers		11. Total Quantity	12. Unit Wt./Vol.	13. Waste Codes
		No.	Type			
X	<b>UN1993 WASTE FLAMMABLE LIQUIDS, N.O.S. (COAL TAR) 3 II</b>	<b>1</b>	<b>TT</b>	<b>540</b>	<b>G</b>	<b>D001</b>

14. Other Hazardous Waste Codes and Additional Information  
**001) ERG 128 1000119211 SO: 1251700**

15. GENERATOR'S/OFFEROR'S CERTIFICATION: I hereby declare that the contents of this consignment are fully and accurately described above by the proper shipping name, and are classified, packaged, marked and labeled/placarded, and are in all respects in proper condition for transport according to applicable international and national governmental regulations. If export shipment and I am the Primary Exporter, I certify that the contents of this consignment conform to the terms of the attached EPA Acknowledgment of Consent. I certify that the waste minimization statement identified in 40 CFR 262.27(a) (if I am a large quantity generator) or (b), (f) (if I am a small quantity generator) is true.

Generator's/Offoror's Printed/Typed Name **AGENT FOR Miller National Grid NY** Signature *[Signature]* Month **17** Day **25** Year **16**

16. International Shipments  Import to U.S.  Export from U.S. Port of entry/exit: \_\_\_\_\_ Date leaving U.S.: \_\_\_\_\_  
Transporter signature (for exports only): \_\_\_\_\_

17. Transporter Acknowledgment of Receipt of Materials  
Transporter 1 Printed/Typed Name **Tony Yearwood** Signature *[Signature]* Month **17** Day **25** Year **16**  
Transporter 2 Printed/Typed Name \_\_\_\_\_ Signature \_\_\_\_\_ Month \_\_\_\_\_ Day \_\_\_\_\_ Year \_\_\_\_\_

18. Discrepancy  
18a. Discrepancy Indication Space  Quantity  Type  Residue  Partial Rejection  Full Rejection  
Manifest Reference Number: \_\_\_\_\_ U.S. EPA ID Number \_\_\_\_\_

18b. Alternate Facility (or Generator) U.S. EPA ID Number \_\_\_\_\_  
Facility's Phone: \_\_\_\_\_  
18c. Signature of Alternate Facility (or Generator) \_\_\_\_\_ Month \_\_\_\_\_ Day \_\_\_\_\_ Year \_\_\_\_\_

19. Hazardous Waste Report Management Method Codes (i.e., codes for hazardous waste treatment, disposal, and recycling systems)  
1. **H135** 2. \_\_\_\_\_ 3. \_\_\_\_\_ 4. \_\_\_\_\_

20. Designated Facility Owner or Operator - Certification of receipt of hazardous materials covered by the manifest except as noted in Item 18a  
Printed/Typed Name **Steve Burgess** Signature *[Signature]* Month **17** Day **25** Year **16**

GENERATOR  
INTL  
TRANSPORTER  
DESIGNATED FACILITY

# Certificate of Disposal

This is to certify that materials from Bartlett's Home Area on hazardous waste manifest number 013708033777 were received at Tradebe Treatment and Recycling of Bridgeport LLC. The materials were treated at our facility at 50 Cross Street, Bridgeport Connecticut. The petroleum and/or solid phase were blended with other materials and burned for its thermal value. The aqueous phase was treated by ultrafiltration, chemical precipitation and carbon absorption.

If you have any questions or would like to visit our facility, please feel free to contact us at (203) 238-6745. Thank you for choosing Tradebe Treatment and Recycling of Bridgeport LLC for your treatment and recovery needs.

7-25-14

Date

Ronnie Hazard  
Ronnie Hazard  
Facility Manager